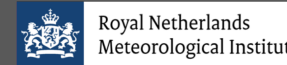
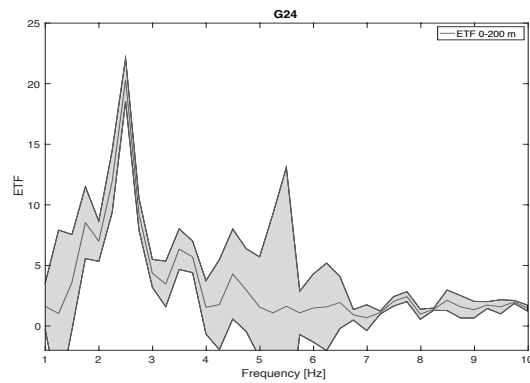


An approach to construct a Netherlands wide ground-motion amplification model

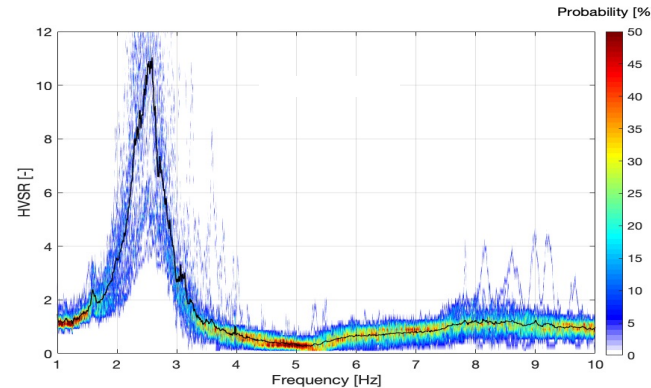
Janneke van Ginkel (j.a.van.ginkel@rug.nl), Elmer Ruigrok, Rien Herber, Jan Stafleu



Calculating amplification in frequency domain

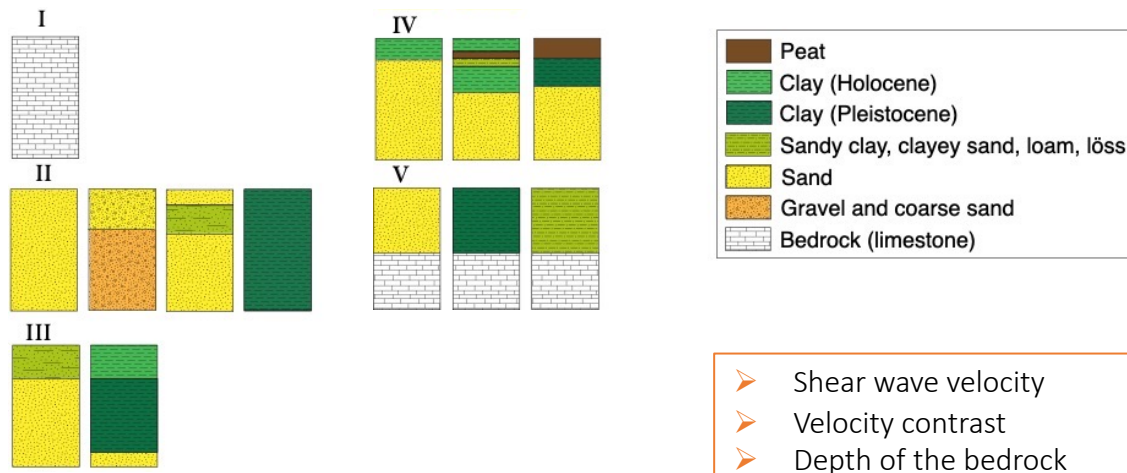


Earthquake transfer functions 200-0 m

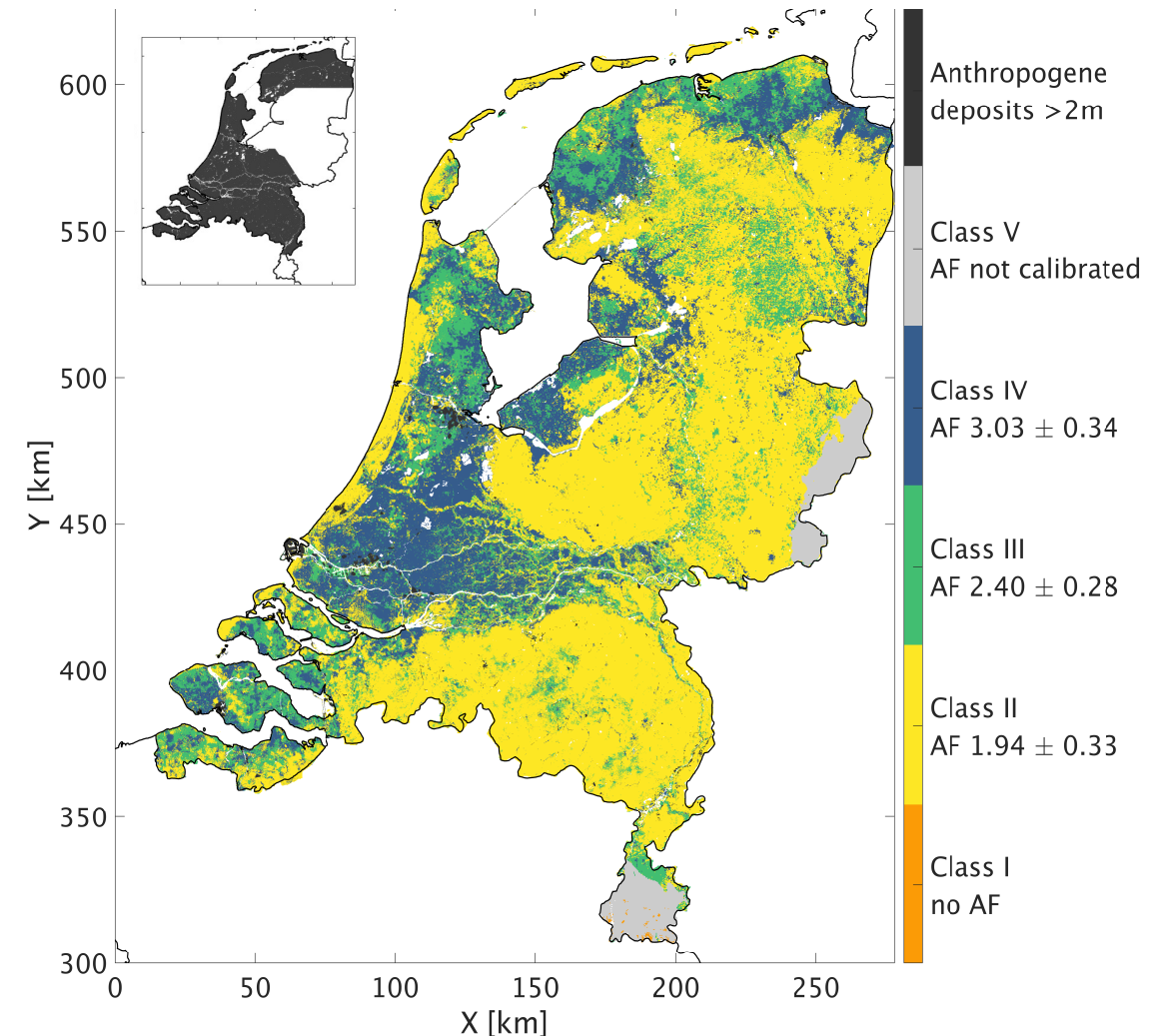


Ambient seismic field horizontal-to-vertical spectral ratios

Sediment classification



The Netherlands site-response zonation map



Based on GeoTOP, NL3D and DGM geological models, TNO, Geological survey of the Netherlands

For more details on methods: van Ginkel et al., 2019, 2020 and 2021 (under review)

Full presentation: <https://youtu.be/Qz3980KaizM>