

# Semi-automated fault extraction and structural analysis from DEM data of the Magadi and Natron basins, East African Rift System

Pauline Gayrin<sup>1</sup>, Thilo Wrona<sup>2</sup>, Sascha Brune<sup>2</sup>, Simon Riedl<sup>3</sup>, Tim Hake<sup>3</sup> - <sup>1</sup>Master student, Université Grenoble Alpes, France; <sup>2</sup>GFZ, Potsdam, Germany; <sup>3</sup> University of Potsdam, Germany - <https://doi.org/10.5194/egusphere-egu21-10695> - Contact Pauline.Gayrin@etu.univ-grenoble-alpes.fr

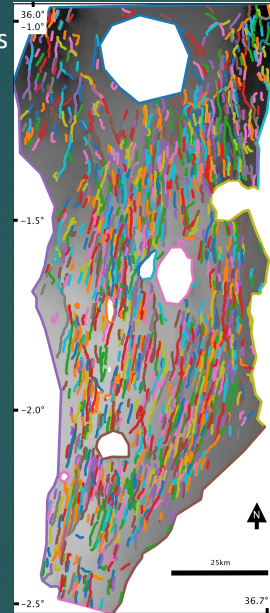
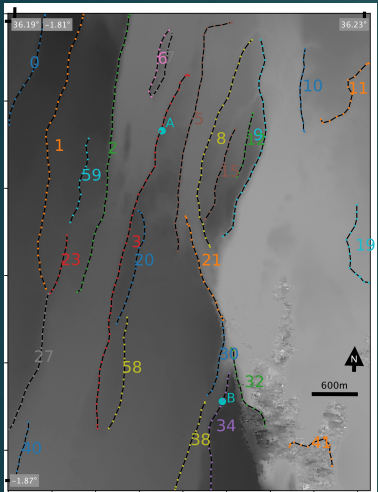


## Benchmark the mapping

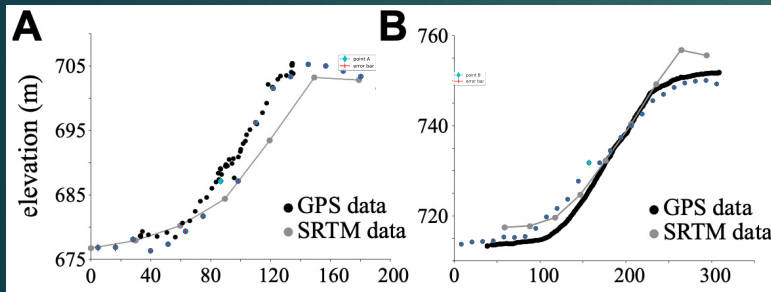


5 step workflow  
Python + diverse libraries  
Network-X mapping

Mapping on whole basin

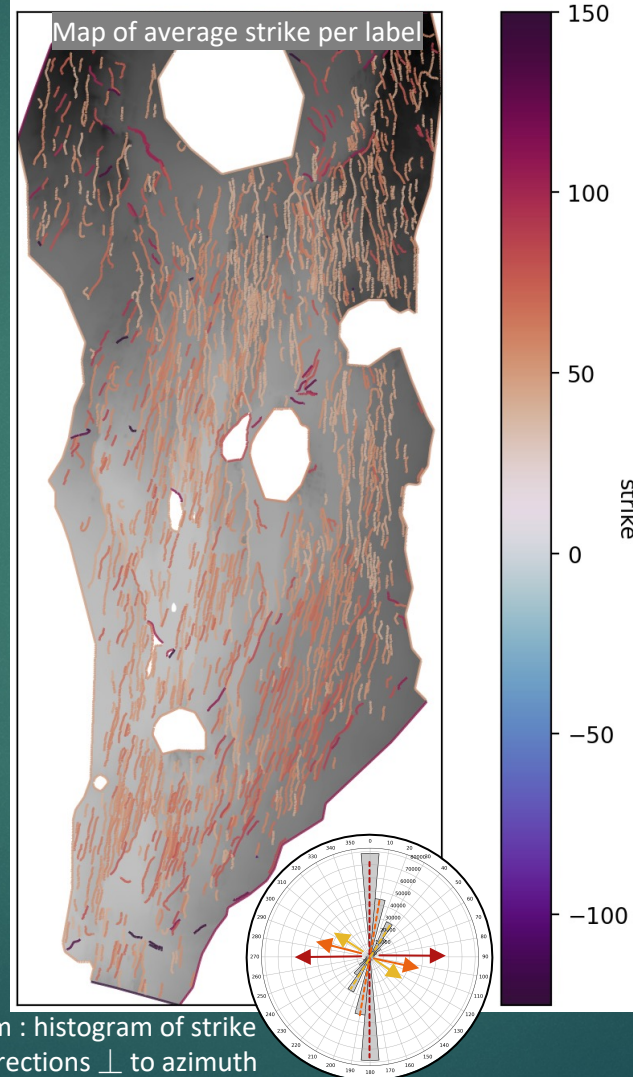


Cross section on A and B, comparison with field survey data



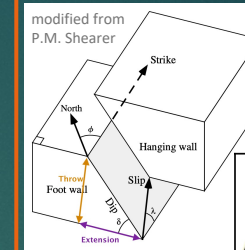
Comparison with Muirhead, 2016

## Structural analysis – strike distribution



Rose diagram : histogram of strike extension directions  $\perp$  to azimuth

## Throw distribution



Map of throw (= vertical offset) on whole basin

