

- O₃ increased largely due to **photochemical repartitioning**
- **Sunnier conditions** in the south of the UK led to higher elevations in O₃ and O_x levels

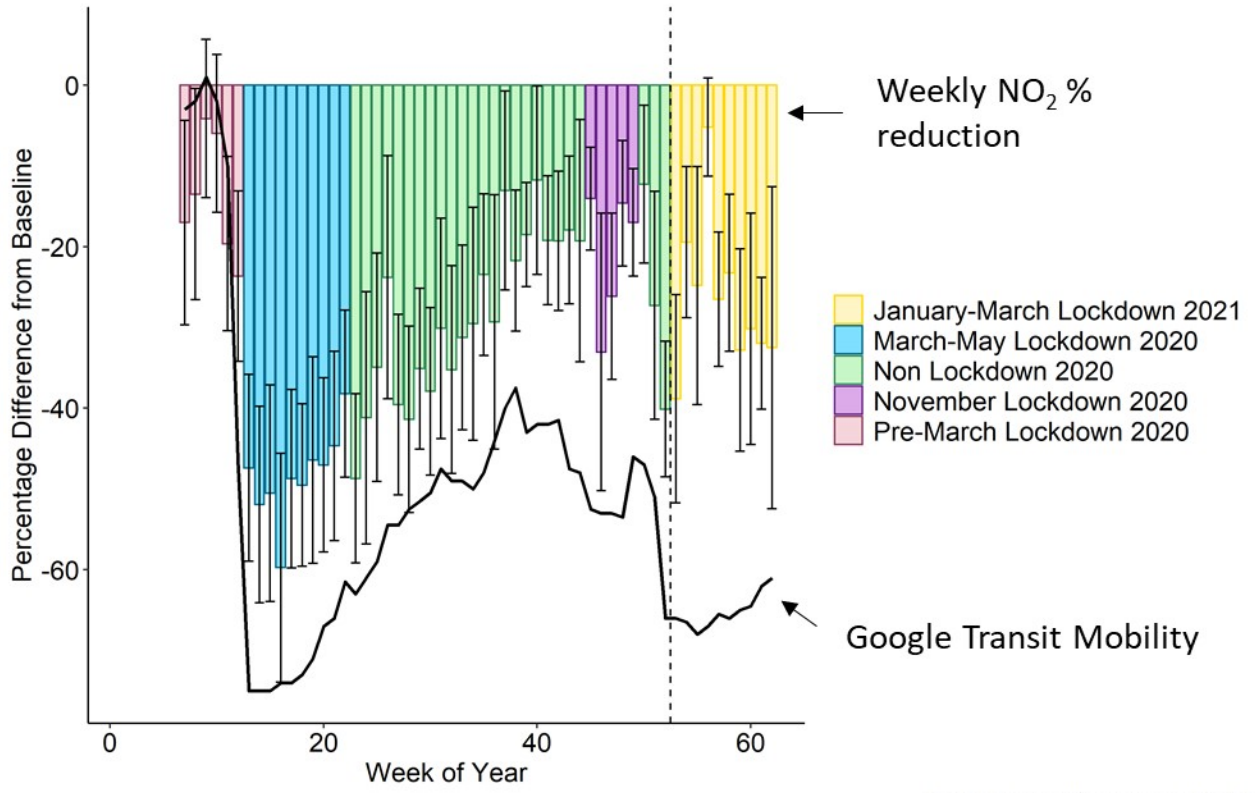
- NO₂ reductions can be associated with changes to **human activity**

NO₂ decreased during lockdowns:

- Spring 2020 = **50%**
- Winter 2021 = **33%**

Smaller winter NO₂ reduction due to:

- Larger **domestic** footprint
- Cars starting in colder conditions



AS3.5 - EGU21-8359

<https://www-users.york.ac.uk/~re691/>

Dashed line indicates start of 2021