

# Division Meeting

# Seismology

P. Martin Mai (sm@egu.eu)

General Assembly 2016 | Wednesday, April 20



Seismology

Division



---

Meetings | Publications | Outreach | [www.egu.eu](http://www.egu.eu)

## Agenda & Topics

- Welcome
- Awards
- Structure of the Seismology Division
- Scientific Program of the GA and for Seismology
- Any other business

## Beno Gutenberg Medal 2016

The 2016 Beno Gutenberg Medal is awarded to **Roel Snieder** in recognition of his outstanding contributions to the theoretical foundations of modern methods of seismic imaging.



***Prof. Roel Snieder***

W.M. Keck Distinguished Professor of Basic Exploration Science  
Center for Wave Phenomena  
Colorado School of Mines  
Golden, USA

## Division Outstanding Young Scientists Award 2016

The 2016 Division Outstanding Young Scientists Award is awarded to **Joseph Doetsch** for outstanding innovative research in the area of exploration, environmental and engineering geophysics.



**Dr. Joseph Doetsch**  
ETH Zurich

Joseph Doetsch is at the forefront of the scientific field of imaging and understanding aquifer structure and processes using a variety of data sets and inversion techniques. He received his PhD from ETH Zurich only four years ago, yet his transformative research has not only resulted in many highly cited papers and numerous well-received conference contributions, but also earned him several scientific awards (like a Society of Exploration Geophysicists Honorable Mention in 2012, an **EGU Outstanding Student Poster Award in 2010**, and an European Association of Geoscientists and Engineers 'Best of Near Surface 2010' award.)

# Outstanding Student Poster & Pico Award 2015

The 2015 Division Outstanding Student Poster & Pico (OSPP) Awards

**Angélie Portal**



*Electrical resistivity tomography applied to a complex lava dome: 2D and 3D models comparison (Portal, A.; Fargier, Y.; Lénat, J.-F.; Labazuy, P.).*

**Elizabeth Entwistle**



*Constructing new seismograms from old earthquakes: Retrospective seismology at multiple length scales (Entwistle, E.; Curtis, A.; Galetti, E.; Baptie, B.; Meles, G.).*

## Nominations for OSPP award

Eligible for the Outstanding Student Poster and PICO (OSPP) Awards are students:

- who are first author & personally present the poster/PICO at the conference;
- who satisfy one of the following criteria:
  - current undergraduate (e.g., BSc) or postgraduate (e.g., MSc, PhD) student;
  - recent undergraduate or postgraduate student (conferral of degree after 1 January of the year preceding the conference)
  - who are presenting their thesis work.

*Each first OSPP author can register only ONE abstract (poster or PICO) for the OSPP contest*

## Nominations for Outstanding Young Scientists Award / Arne Richter Award for Outstanding Young Scientists

**Nomination letter (1/2 page)** including the division that the candidate's research is most applicable to.

**Curriculum Vitae.** A summary of the candidate's CV (1 page) including their date of birth and the date when their highest degree qualification was received.

**Selected bibliography.** A list of selected publications by the candidate that best support the nomination (1/2 page). It should also state briefly the candidate's total number and types of publications and citations.

The whole nomination package for the Outstanding Young Scientists Award / Arne Richter Award for Outstanding Young Scientists must not exceed 2 pages. Otherwise the nomination will not be accepted.

**Arne Richter Award:** From all division OYSA winners, four are selected for the EGU-wide Arne Richter Award, within four distinct groups [Solid Earth, Soft Earth, Planetary and Space Sciences, Interdisciplinary]

**Deadline for Nomination Package  
(submitted online to EGU)  
June 15, 2016**

## Nominations for Beno Gutenberg Medal

**Nomination letter (1 page).** This must clearly detail why the candidate deserves this recognition, in particular focus on the candidate's scientific contributions to the field, their importance, their impact on the discipline and their implications for the future. The new views and new insights that have been stimulated by the candidate's work are particularly relevant.

**Curriculum Vitae (2 pages).** A summary of the candidate's CV, including the candidate's name, address, history of employment, degrees, research experience, honours, and service to the community.

**Selected bibliography (2 pages).** A list of selected publications by the candidate that best support the nomination. It should also state briefly the candidate's total number and types of publications and citations.

**Supporting letters.** Between 3 and 5 letters of support (maximum 2 pages each) should be submitted. These letters should clearly establish the nominee's recognised contribution to the field.

**Deadline for Nomination Package**  
(submitted online to EGU)  
**June 15, 2016**



## Beno Gutenberg Medal – Committee for 2017

The **Committee** for the Beno Gutenberg Medal 2017 is composed of the last five medalists who have been awarded the Beno Gutenberg Medal

**2016**



Roel Snieder

**2015**



Göran Ekström

**2014**



Greg Beroza

**2013**



Jeroen Tromp  
(Chair)

**2012**



Michel Campillo

**2017 ?**



## Agenda & Topics

- Welcome
- Awards
- Structure of the Seismology Division
- Scientific Program of the GA and for Seismology
- Any other business

## Structure of the Seismology Division

- EGU is a bottom-up organization, and we – as a division – are pretty free/flexible on how to organize ourselves
- Currently (since 04/2015) we are a very “slim” division

### SM Structure

<b>President</b>	Paul Martin Mai	<a href="mailto:sm@egu.eu">sm@egu.eu</a>
<b>Deputy President</b>	Charlotte Krawczyk	<a href="mailto:lotte@liag-hannover.de">lotte@liag-hannover.de</a>
<b>Programme Group Chair</b>	Paul Martin Mai	<a href="mailto:sm@egu.eu">sm@egu.eu</a>
<b>Publications Committee</b>	Charlotte Krawczyk	<a href="mailto:lotte@liag-hannover.de">lotte@liag-hannover.de</a>
<b>Beno Gutenberg Medal Chair</b>	Michel Campillo	<a href="mailto:michel.campillo@ujf-grenoble.fr">michel.campillo@ujf-grenoble.fr</a>
<b>OSPP Coordinator</b>	Laura Peruzza	<a href="mailto:lperuzza@inogs.it">lperuzza@inogs.it</a>

# Structures of other Divisions

## BG Structure

<b>President</b>	Alina Stadnitskaia	<a href="mailto:bg@egu.eu">bg@egu.eu</a>
<b>Deputy President</b>	Albert Bentien	<a href="mailto:albert.bentien@awi.de">albert.bentien@awi.de</a>
<b>Programme Group Chair</b>	Alina Stadnitskaia	<a href="mailto:bg@egu.eu">bg@egu.eu</a>
<b>Science Officers</b>	-	-
	<i>Terrestrial Biogeosciences</i>	
	Caroline Slomp <i>Marine Biogeosciences</i>	<a href="mailto:c.p.slomp@uu.nl">c.p.slomp@uu.nl</a>
	Christian Blodau <i>Freshwater Biogeosciences</i>	<a href="mailto:c.blodau@uni-muenster.de">c.blodau@uni-muenster.de</a>
	Andy Ridgwell <i>Earth System Biogeosciences</i>	<a href="mailto:andy.ridgwell@bristol.ac.uk">andy.ridgwell@bristol.ac.uk</a>
	-	-
	<i>Paleo Biogeosciences</i>	
	Helge Niemann <i>Geomicrobiology &amp; Extreme Environments</i>	<a href="mailto:helge.niemann@unibas.ch">helge.niemann@unibas.ch</a>
	-	-
	<i>Astrobiology &amp; Early Evolution of Life</i>	
	Alina Stadnitskaia <i>General Biogeosciences</i>	<a href="mailto:bg@egu.eu">bg@egu.eu</a>
	Alina Stadnitskaia <i>Industrial Biogeosciences &amp; Technology</i>	<a href="mailto:bg@egu.eu">bg@egu.eu</a>
<b>Publications</b>	Jürgen Kesselmeier	<a href="mailto:j.kesselmeier@mpic.de">j.kesselmeier@mpic.de</a>
<b>Public Outreach &amp; Education</b>	Alina Stadnitskaia	<a href="mailto:bg@egu.eu">bg@egu.eu</a>
<b>Scientific Affairs</b>	Alina Stadnitskaia	<a href="mailto:bg@egu.eu">bg@egu.eu</a>
<b>Foreign Affairs</b>	Alina Stadnitskaia	<a href="mailto:bg@egu.eu">bg@egu.eu</a>
<b>Vladimir Ivanovich Vernadsky Medal Chair</b>	Jörn Peckmann	

## TS Structure

<b>President</b>	Susanne Buitert	<a href="mailto:ts@egu.eu">ts@egu.eu</a>
<b>Deputy President</b>	Magdalena Scheck-Wenderoth	<a href="mailto:magdalena.scheck@gfz-potsdam.de">magdalena.scheck@gfz-potsdam.de</a>
<b>Programme Group Chair</b>	Susanne Buitert	<a href="mailto:ts@egu.eu">ts@egu.eu</a>
<b>News &amp; Media Officer</b>	Marcel Frehner	<a href="mailto:marcel.frehner@erdw.ethz.ch">marcel.frehner@erdw.ethz.ch</a>
<b>Division Outstanding Young Scientist Award Chair</b>	Susanne Buitert	<a href="mailto:ts@egu.eu">ts@egu.eu</a>
<b>Stephan Mueller Medal Chair</b>	Fabrizio Storti	<a href="mailto:fabrizio.storti@unipr.it">fabrizio.storti@unipr.it</a>
<b>OSPP Coordinator</b>	Francesca Cifelli	<a href="mailto:francesca.cifelli@uniroma3.it">francesca.cifelli@uniroma3.it</a>
<b>ECS Representative</b>	Anne Pluymakers	<a href="mailto:a.m.h.pluymakers@fys.uio.no">a.m.h.pluymakers@fys.uio.no</a>
<b>ECS Co-Representative</b>	João Duarte	<a href="mailto:joao.duarte@monash.edu">joao.duarte@monash.edu</a>
<b>Webmaster</b>	Marcel Frehner	<a href="mailto:marcel.frehner@erdw.ethz.ch">marcel.frehner@erdw.ethz.ch</a>

## TS Programme Group

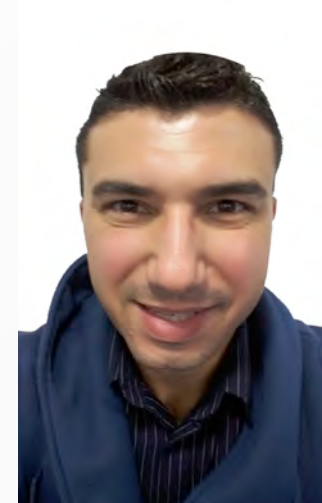
<b>Brittle Deformation</b>	Rüdiger Kilian	<a href="mailto:ruediger.kilian@unibas.ch">ruediger.kilian@unibas.ch</a>
<b>Ductile Deformation, Metamorphism and Magmatism</b>	Rüdiger Kilian	<a href="mailto:ruediger.kilian@unibas.ch">ruediger.kilian@unibas.ch</a>
<b>Extensional Tectonic Settings</b>	Rebecca Bell	<a href="mailto:rebecca.bell@imperial.ac.uk">rebecca.bell@imperial.ac.uk</a>
<b>Convergent Tectonic Settings</b>	Olivier Lacombe	<a href="mailto:olivier.lacombe@upmc.fr">olivier.lacombe@upmc.fr</a>
<b>Earthquakes and Tectonics</b>	Hiroki Sone	<a href="mailto:hiroki.sone@gfz-potsdam.de">hiroki.sone@gfz-potsdam.de</a>
<b>Interplay between Tectonics and Surface Processes</b>	Stéphane Bonnet	<a href="mailto:stephane.bonnet@get.obs-mip.fr">stephane.bonnet@get.obs-mip.fr</a>
<b>Methods and Techniques</b>	Karen Leever	<a href="mailto:karen.leeveer@gfz-potsdam.de">karen.leeveer@gfz-potsdam.de</a>
<b>Plate Tectonics</b>	Susanne Buitert	<a href="mailto:ts@egu.eu">ts@egu.eu</a>
<b>General Contributions</b>	Susanne Buitert	<a href="mailto:ts@egu.eu">ts@egu.eu</a>

## Structure of the Seismology Division

- Early Career Scientists (ECS) representatives
- Science Officers
- Deputy President





## Early Career Scientists representatives

- 2014 – 2016: Matthew Aguis
- EGU Seismology Division Blog
- EGU Seismology Division Facebook



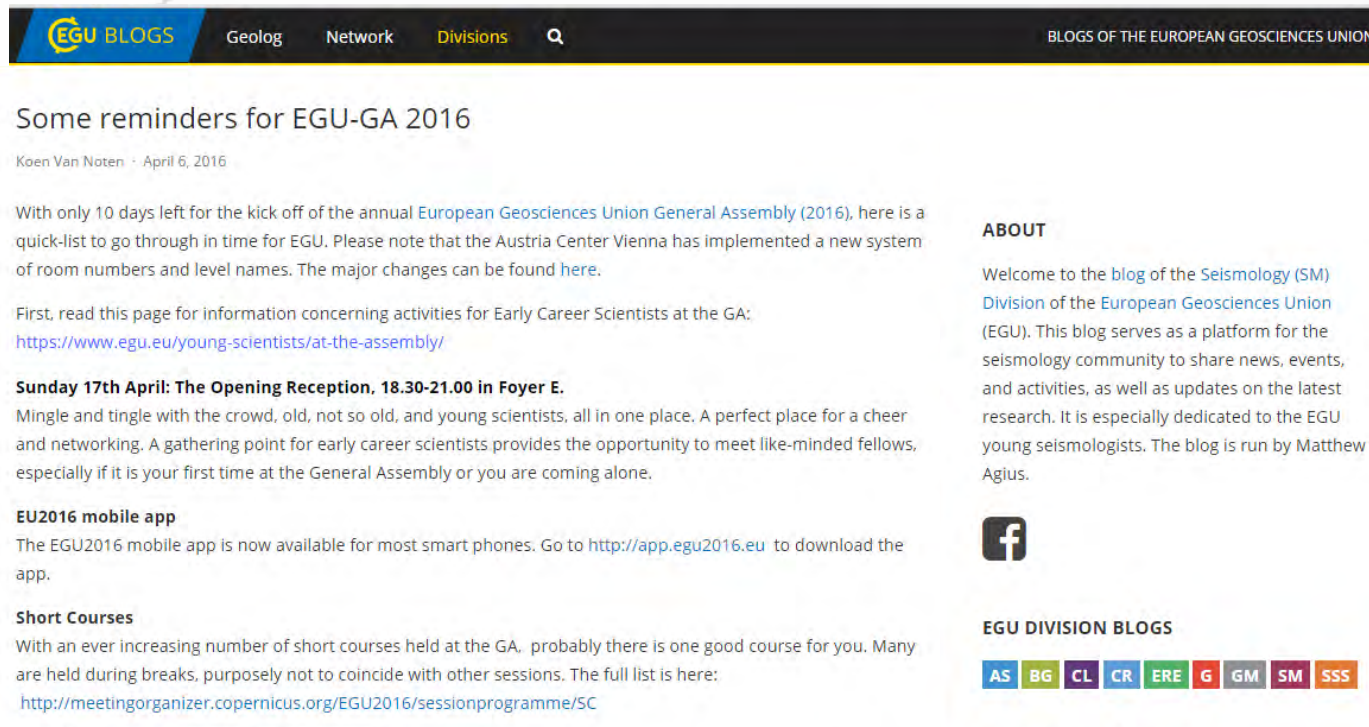
# EGU Seismology Division on Facebook



Post	Type	Targeting	Reach
 A great and Easy tool to visualize your cross sectional data in G	\$	🌐	1.6K
 This year one of the winners of the Pulitzer prize has something	\$	🌐	1.5K
 Having trouble to integrate seismological research results into y	\$	🌐	1.4K
 "Dziewonski was a giant in seismology. Among others, we owe	\$	🌐	1.2K

- Regular posts on conferences calls and deadlines, new catchy research results, social events, course and summer school announcements, latest earthquake news, advertising blog texts...
- 745 “likes” and rapidly increasing during EGU GA
- Administered by the ECS team
- Fast and fun
- Worldwide interest !
- Best posts reaching > 1.500 people

# EGU Seismology Division Blog



The screenshot shows the EGU Seismology Division Blog website. The header includes the EGU BLOGS logo, navigation links for Geolog, Network, Divisions, and a search icon, and the text 'BLOGS OF THE EUROPEAN GEOSCIENCES UNION'. The main content area features a post titled 'Some reminders for EGU-GA 2016' by Koen Van Noten, dated April 6, 2016. The post text includes a quick-list for the annual European Geosciences Union General Assembly (2016), information for Early Career Scientists at the GA, and details about the Sunday 17th April Opening Reception, the EU2016 mobile app, and Short Courses. A sidebar on the right contains an 'ABOUT' section and a 'EGU DIVISION BLOGS' section with a row of colored buttons for AS, BG, CL, CR, ERE, G, GM, SM, and SSS. A Facebook icon is also present in the sidebar.

- Blogs administered by EGU
- More official than facebook
- Blog texts by ECS Team and guest writers
- **WE ARE LOOKING FOR GUEST WRITERS ! Blog texts from seniors in Seismology would be great !**



## Early Career Scientists representatives

- 2016 – 2016: NEW – **The ECS Team**
- Broader representation of interests, backgrounds, ideas, contacts
- Share a vision – and the efforts – to dive into specific areas
  - ECS Events in Seismology
  - ECS Outreach in Seismology
  - ECS Industry/Academia Relation in Seismology

## Early Career Scientists representatives



**Redouane Chimouni**  
PhD Student  
Univ. of Algiers



**Kathrin Spieker**  
PhD Student  
Univ. Bergen



**Lucia Gualteri**  
Post-doc  
Lamont-Doherty Earth Obs.



**Koen Van Noten**  
Post-docs  
R. Obs. Belgium



**Laura Ermert**  
PhD Student  
ETH Zurich



**Laura Parisi**  
Post-doc  
KAUST  
EGU-CONTACT

## Early Career Scientists – EVENT TONITE !!



**Don't miss out!**

**SM EGU Seismology Social Event**

Wednesday 20th April 2016  
8pm  
Bermuda Brau  
Brennerei, Rabensteig 6, 1010, Wien.

**All Seismology community  
is welcome to join!**  
Organised by SM ECS-rep team\*

**EGU General Assembly 2016**

\*Seismology Early Career Scientist representative team

## Science Officers for the Seismology Division

- Help to define the strategy of the Division
- Help to organize sessions and events (at GA: workshops; splinter meetings etc) along a main scientific topic
- Help to coordinate sessions across the various divisions
- Help to candidates for the Division Awards
- The topics are NOT cast in stone, but can be (should be) defined by the division
- The respective science officers are voted into office by the division

## Science Officers for the Seismology Division

- Near-Surface & Controlled-Source Seismology
- Seismic Instrumentation & Infrastructure
- Induced & Triggered Seismology
- Statistical & Real-Time Seismology
- Strong-Motion & Engineering Seismology
- Seismic & Tsunami Hazard
- Earthquake Source Processes
- Computational Seismology
- Surface-Waves & Seismic Interferometry
- Seismic Tomography & Earth Structure Imaging
- Seismotectonics & Geodynamics
- ??
- Cedric Schmelzbach, ETH Z
- Damiano Pesaresi, OGS T
- Philippe Jousset, GFZ P
- Aldo Zollo, Univ. Naples
- Fabrice Cotton, GFZ P
- ??
- ??
- Heiner Igel, LMU M
- Lapo Boschi, ISTEP P
- ??
- Susana Custodio,
- ??

## Science Officers for the Seismology Division



### **Damiano Pesaresi**

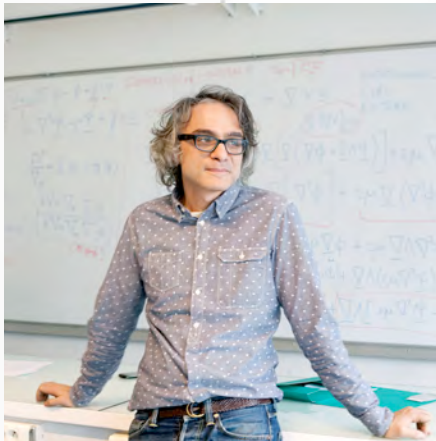
Experience: Mediterranean seismic Network (MedNet) field equipment coordinator, CTBTO seismic officer, Italian CTBTO NDC technical manager, OGS-CRS data acquisition coordinator, [CE<sup>3</sup>RN](#), [SeismoSAT](#)

Expertise in: seismic networks, data acquisition, Earthquake Early Warning (EEW), CTBTO

Memberships: ORFEUS (WG2 instrumentation chairman), FDSN (WG IV CTBTO), EMSC (OGS POC), ESC (ESC GA 2016 LOC), AlpArray, EGU

Convener Seismic Networks sessions at EGU GA 2010, 2011, 2012, 2013, 2014, 2015 and 2016 and ESC GA 2010, 2012, 2014 and 2016

## Science Officers for the Seismology Division



### Lapo Boschi

Lapo Boschi (born in Bologna, Italy, in 1972) studies how waves propagate in complex media, and applies this knowledge to a number of different fields of research, within the general domains of acoustics and seismology. He is interested in wave-based imaging in geology; sound localization in acoustics; acoustic display. He teaches geology and geophysics, seismology and signal analysis, history of the earth sciences, programming and numerical modeling.

Lapo Boschi received his Ph.D. from Harvard University in 2001, after having worked for five years under the supervision of Goran Ekstrom and Adam Dziewonski. After a two-year post-doc at the university of Naples, he was for 9 years senior researcher at the ETH of Zurich. Since 2012, he holds a position of lecturer at the Institute of Earth Sciences, University Pierre and Marie Curie, Paris.

## Deputy President for the Seismology Division

- Helps to define the strategy of the Division
- Helps to coordinate with Science Officers and other divisions to build a strong and coherent seismology program for the GA
- Assists the Division President, and replaces him/her if needed in official EGU matters (e.g. Council Meetings)
- Could be (should be?) the designated next Division President (to ensure smooth transition and knowledge transfer)



## Agenda & Topics

- Welcome
- Awards
- Structure of the Seismology Division
- Scientific Program of the GA and for Seismology
- Any other business

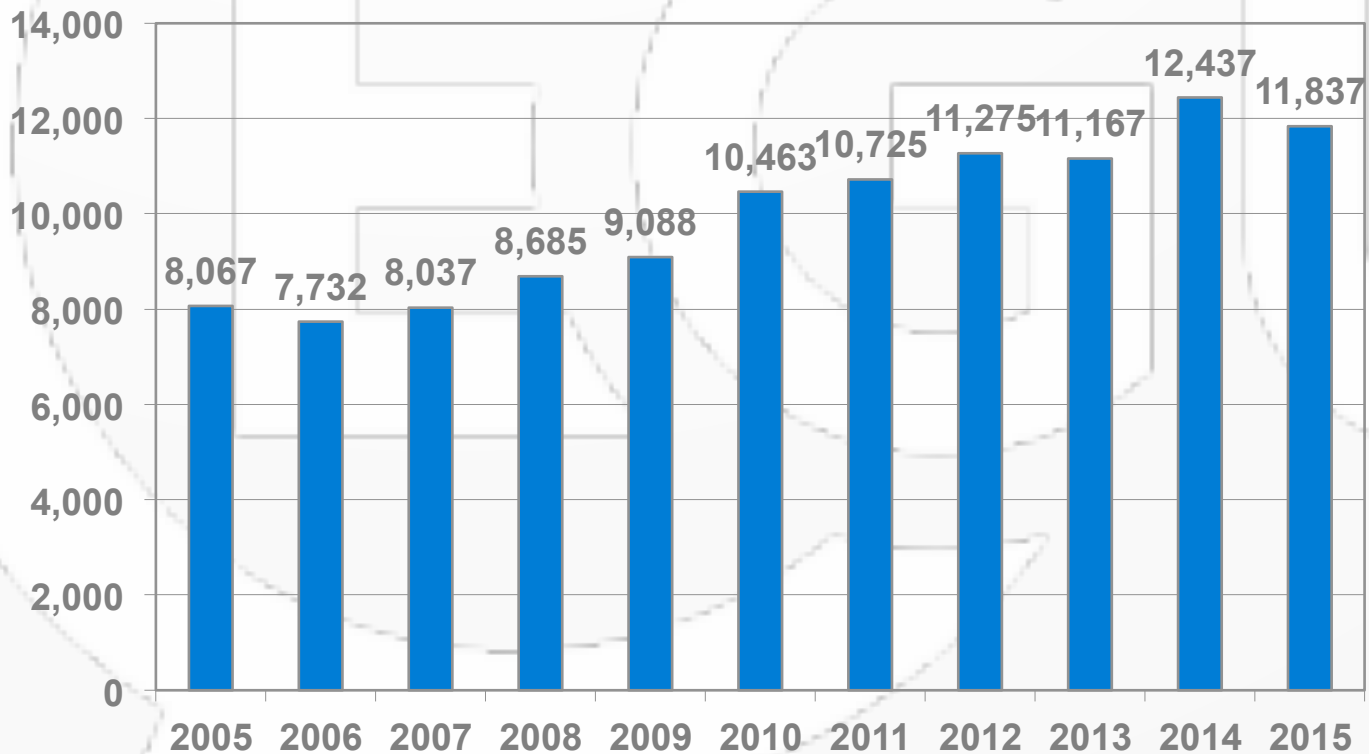
## Scientific Program of the GA and for Seismology

- General Assembly 2016 (as of April 14, 2016)
- 16,130 papers in programme | +13.34% (2015)
- 4,863 orals | 10,320 posters | 947 PICOs | ratio 30 / 64 / 6
- 619 unique scientific sessions | 321 side events\*
- 10,988 registrations in advance (10,943 already paid) | +23.68% (2015)

\*Side events include: SSE (w/o US), OEM (w/o EOS), STM, FAN, AM

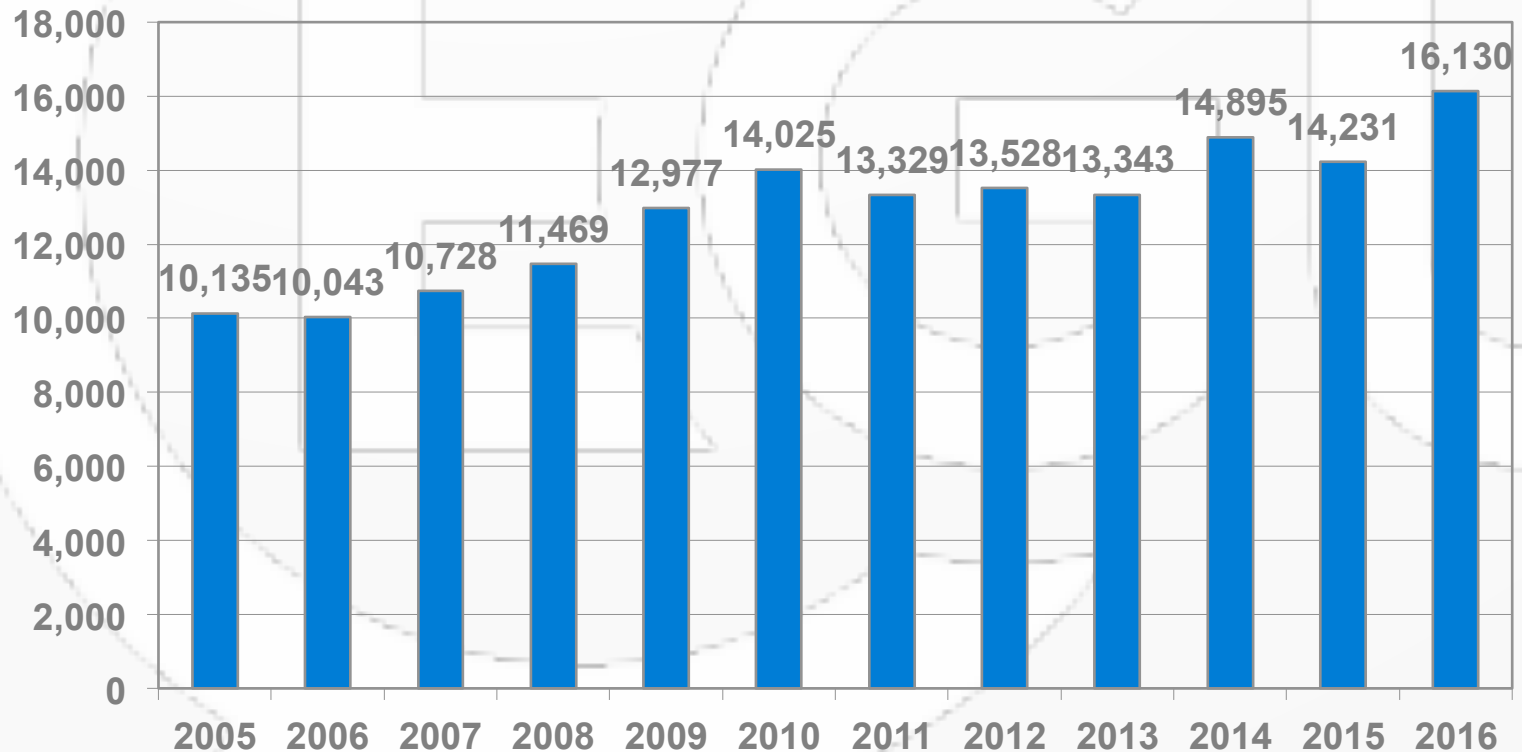
# Scientific Program of the GA and for Seismology

- **Participants, 2005 – 2016**



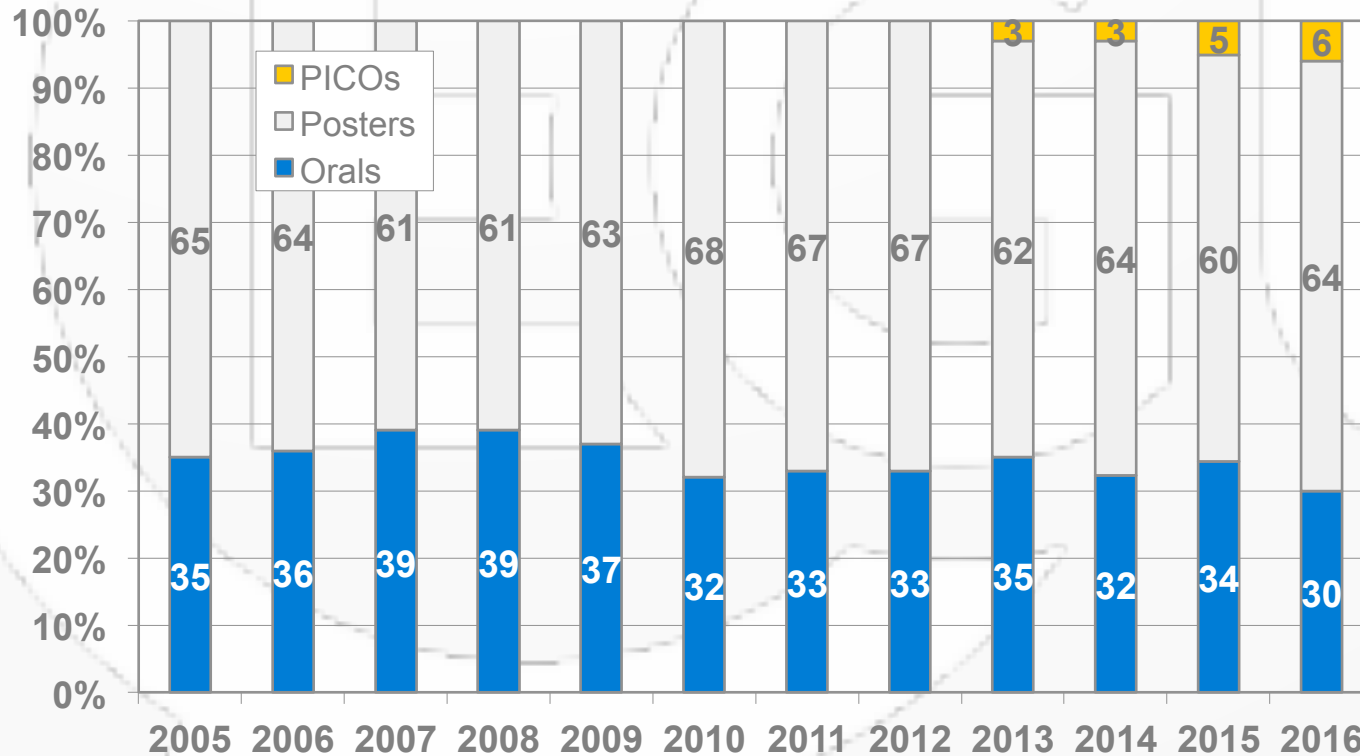
# Scientific Program of the GA and for Seismology

- **Papers, 2005 – 2016**



# Scientific Program of the GA and for Seismology

- Presentation Ratio, 2005 – 2016**



# Scientific Program of the GA and for Seismology

Programme Group		Lead sessions		Co-org. sessions		Total		
		#Abs.	%	#Ses.	#Abs.	#Ses.	#Abs.	#Ses.
SSE	Special scientific events	48	0%	55	0	0	48	55
OEM	Outreach, education, and media	265						
STM	Short courses and topical meetings	0						
FAN	Feedback and networking	0						
AM	Administrative meetings	0						
IE	Interdisciplinary events	471						
AS	Atmospheric Sciences	1,618	10%	52	1,204	41	2,822	93
BG	Biogeosciences	890	5%	39	681	25	1,571	64
CL	Climate: Past, Present, Future	1,343	8%	45	886	31	2,229	76
CR	Cryospheric Sciences	480	3%	21	507	19	987	40
EMRP	Earth Magnetism & Rock Physics	267	2%	12	560	19	827	31
ERE	Energy, Resources and the Environment	474	3%	20	261	12	735	32
ESSI	Earth & Space Science Informatics	232	1%	13	150	5	382	18
G	Geodesy	401	2%	15	112	3	513	18
GD	Geodynamics	432	3%	17	601	19	1,033	36
GI	Geosciences Instrumentation & Data Systems	264	2%	14	357	17	621	31
GM	Geomorphology	546	3%	23	1,136	42	1,682	65
GMPV	Geochemistry, Mineralogy, Petrology & Volcanology	556	3%	18	745	25	1,301	43
HS	Hydrological Sciences	2,221	13%	80	1,075	44	3,296	124
NH	Natural Hazards	1,248	7%	44	1,287	44	2,535	88
NP	Nonlinear Processes in Geosciences	352	2%	16	189	11	541	27
OS	Ocean Sciences	451	3%	14	744	26	1,195	40
PS	Planetary & Solar System Sciences	431	3%	16	301	12	732	28
SM	Seismology	505	3%	17	936	31	1,441	48
SSP	Stratigraphy, Sedimentology & Palaeontology	548	3%	19	258	10	806	29
SSS	Soil System Sciences	1,450	9%	53	1,187	61	2,637	114
ST	Solar-Terrestrial Sciences	534	3%	18	159	6	693	24
TS	Tectonics & Structural Geology	754	4%	23	604	24	1,358	47
<b>Sum</b>		<b>16,788</b>	<b>100%</b>	<b>891</b>				

Programme Group		Lead sessions			Co-org. sessions		Total	
		#Abs.	%	#Ses.	#Abs.	#Ses.	#Abs.	#Ses.
<b>SM</b>	<b>Seismology</b>	505	3%	17	936	31	1,441	48

## Programme Group Statistics

<b>Accepted</b>	<b>Total: 1,457</b>
Status	Active: 1,441 (99%) Withdrawn: 16 (1%)
Granted supports	None: 1,437 (99%) ECSTA: 4 (0%)
Presentation requests	Oral preference: 724 (50%) PICO: 3 (0%) Poster preference: 714 (49%)
Author identification specifics	ECS: 650 (45%)

# Scientific Program of the GA and for Seismology

Programme Group		Lead sessions			Co-org. sessions		Total	
		#Abs.	%	#Ses.	#Abs.	#Ses.	#Abs.	#Ses.
SM	Seismology	505	3%	17	936	31	1,441	48

- ▶ SM1 – General Seismology Sessions
- ▶ SM2 – Earthquake Sources & Earthquake Engineering
- ▶ SM3 – Seismic Hazard & Earthquake Predictability
- ▶ SM4 – Seismic Tomography
- ▶ SM5 – Near-surface and Controlled-source Seismology
- ▶ SM6 – Seismotectonics & Geodynamics
- ▶ SM7 – Seismic Infrastructures & Software
- ▶ SM8 – Co-organized Sessions

## Scientific Program of the GA and for Seismology

- The meeting is increasing continuously, in number of people and abstracts, but the venue is fixed in size
- Scheduling will be increasingly difficult, and fragmentation for small sessions is likely to increase; in 2016, 22 abstracts were needed for an oral block, in 2017? 25?
- Small sessions are likely to be merged, or *poster only*
- Do we – as a division – want to make an effort to grow, and to try to avoid ‘fragmentation’?
- The skeleton program for GA17 will be developed until 09/16



## Agenda & Topics

- Welcome
- Awards
- Structure of the Seismology Division
- Scientific Program of the GA and for Seismology
- Any other business

## EGU Galileo Conferences

### **Purpose of Galileo conferences:**

- Bring together up to 100 participants for a 3-5 days meeting to discuss a well-focused cutting-edge topic at the frontier of geosciences research in a stimulating environment.
- Possibility to publish a special Galileo Conference proceeding issue in one of the EGU journals

### **Support:**

- EGU is putting at disposal the conference organization tools; web hosting, abstract, programme and registration management.
- EGU provides comprehensive organisational support by organizing e.g. venue, poster boards, catering, Wi-Fi facilities, etc. Thereby the organising committee can fully focus on the scientific aspects of the conference.
- Support for Early Career Scientists (up to 5000€)
- EGU is covering a potential deficit of the event.

## EGU Admin / Structure / Finances

- Many details were discussed in the Plenary (Monday)
- Transition from EGU France to EGU e.V. (Germany) on its way; EGU G.m.b.H runs journals etc.
- Financial situation of EGU stable, but heavily subsidizing EGU journals (i.e. waiving page charges) generates a deficit that will be compensated by 2017
- More questions: ask me or browse EGU website

## Final remarks

- Don't forget the deadlines for award nominations: June 15 !
- Planning for the GA17 begins in summer, until mid Sept !
- Engage with the ECS-reps; write for the Seismo-Blog !
- Enjoy the rest of the meeting !

contact to discuss division matters

Martin Mai | [sm@egu.eu](mailto:sm@egu.eu)

[martin.mai@kaust.edu.sa](mailto:martin.mai@kaust.edu.sa)

**! the division lives from y/our initiatives !**