



**European Geosciences Union**  
Division on Climate: Past, Present & Future



Climate: Past, Present & Future

Division Business meeting 2012



**Welcome!!!**



# Agenda

1. CL Organisation
2. Awarding of YSOPP awards from EGU 2010
3. EGU 2012 Statistics
4. Some CL items during GA 2012
5. Call for Skeleton Programme for EGU 2013
6. Call for MEDAL nominations (by 15 June 2012)
7. CP Report [Hugues Goose, co-Editor-in chief 2011-2012]
8. Election CL President
9. A new concept: EGU topical conferences
10. What worked, what didn't work at EGU 2012?



# Agenda

1. **CL Organisation**
2. Awarding of YSOPP awards from EGU 2010
3. EGU 2012 Statistics
4. Some CL items during GA 2012
5. Call for Skeleton Programme for EGU 2013
6. Call for MEDAL nominations (by 15 June 2012)
7. CP Report [Hugues Goose, co-Editor-in chief 2011-2012]
8. Election CL President
9. A new concept: EGU topical conferences
10. What worked, what didn't work at EGU 2012?





# European Geosciences Union

Division on Climate: Past, Present & Future



## 1. CL Organisation

### Administration

#### Climate: Past, Present & Future

<b>President:</b>	Denis-Didier Rousseau	<a href="mailto:denis.rousseau@lmd.ens.fr">denis.rousseau@lmd.ens.fr</a>
<b>Science Officers:</b>	Jules Hargeaves	<a href="mailto:juleswork@mac.com">juleswork@mac.com</a>
	Jan-Berrend Stuur	<a href="mailto:jbstuur@nioz.nl">jbstuur@nioz.nl</a>
	Martin Wild	<a href="mailto:martin.wild@env.ethz.ch">martin.wild@env.ethz.ch</a>
<b>Publications:</b>	Eric Wolff	<a href="mailto:ewwo@bas.ac.uk">ewwo@bas.ac.uk</a>
<b>Awards &amp; Medals:</b>	Dominique Raynaud	<a href="mailto:raynaud@lgge.obs.ujf-grenoble.fr">raynaud@lgge.obs.ujf-grenoble.fr</a>
	Martin Claussen	<a href="mailto:martin.claussen@zmaw.de">martin.claussen@zmaw.de</a>
<b>PC Programme Group Chair:</b>	Denis-Didier Rousseau	<a href="mailto:denis.rousseau@lmd.ens.fr">denis.rousseau@lmd.ens.fr</a>

There is a need to manage CL webpages and somebody for outreach.  
Anybody interested?



# Agenda

1. CL Organisation
2. **Awarding of OSP awards from EGU 2010**
3. EGU 2012 Statistics
4. Some CL items during GA 2012
5. Call for Skeleton Programme for EGU 2013
6. Call for MEDAL nominations (by 15 June 2012)
7. CP Report [Hugues Goose, co-Editor-in chief 2011-2012]
8. Election CL President
9. A new concept: EGU topical conferences
10. What worked, what didn't work at EGU 2012?



## 2.1 OSP

- **Former Young Scientist Outstanding Poster Presentation (YSOPP) Award renamed Outstanding Student Poster (OSP).**
- **2 awards from EGU 2011.**
- **Each laureate:**
  - **Has name, picture, poster published on EGU medals/awards homepage;**
  - **Appears in EGU newsletter;**
  - **Receives conference fee waiver for the next EGU General Assembly.**





## 2.2 OSP

### Climate: Past, Present & Future



#### Bernhard Bereiter

The 2011 Union Outstanding Student Poster (OSP) Awards is awarded to Bernhard Bereiter for the poster entitled:

*Atmospheric CO<sub>2</sub> during the last glaciation and its implications for changes in the carbon cycle* (Bereiter, B.; Lüthi, D.; Siegrist, M.; Schüpbach, S.; Stocker, T. F.; Fischer, H.).

Click [here](#) to download the poster as PDF-file.

#### Resumé:

Bernhard Bereiter is a PhD student at the Institute for Climate- and Environmental Physics and Oeschger Centre for Climate Change Research of the University of Bern, Switzerland. He is supervised by Thomas F. Stocker and works with polar ice cores used to reconstruct the past climate. His main focus are reconstructions of atmospheric CO<sub>2</sub> concentrations during glacial-interglacial as well as millennial-scale climate variations. Further research interests are changes of gas inclusions in ice cores. In his poster he presents highly-resolved CO<sub>2</sub> data for the period of the last glacial intercession and shows that CO<sub>2</sub> variations associated with millennial-scale climate variations from the early part of the record are distinct from the ones of the later part, indicating further influence of ocean circulation changes on CO<sub>2</sub>.



# European Geosciences Union

## Division on Climate: Past, Present & Future



## 2.2 OSP

### Climate: Past, Present & Future



**Niklaus Merz**

The 2011 Union Outstanding Student Poster (OSP) Awards is awarded to Niklaus Merz for the poster entitled:

*Regional links between atmospheric variability and the sea-ice - ocean system in the Southern Ocean area (Merz, N.; Wilmes, S.-B.; Sedlacek, J.; Raible, C. C.; Knutti, R.).*

Click [here](#) to download the poster as PDF-file.

### Resumé:

Currently, Niklaus Merz is a PhD student at the University of Bern (Switzerland) working on changes in the atmospheric circulation during interglacial periods. On the EGU 2011 poster he presents his master thesis written at the ETH Zurich under the supervision of Jan Sedlacek and Reto Knutti, where he investigated the importance of the atmospheric variability, e.g., the Southern Annular Mode, on the Southern Hemisphere sea-ice. The poster discusses some interesting features found in reanalysis data of the last 30 years and compares it with the output of a comprehensive climate model (NCAR CCSM3).





## 2.3 OYS

- **Arne Richter Award for Outstanding Young Scientists**  
(formerly Outstanding Young Scientist Award)  
No award for CL.

**But CL laureate:**

- **Didier Roche, LSCE, France**

Climate: Past, Present & Future



**Didier M. Roche**

The 2012 Division Outstanding Young Scientists Award is awarded to Didier M. Roche for his innovative development of forward models of isotopic proxies and his contribution to the understanding of past climate changes.



# Agenda

1. CL Organisation
2. Awarding of YSOPP awards from EGU 2010
3. **EGU 2012 Statistics**
4. Some CL items during GA 2012
5. Call for Skeleton Programme for EGU 2013
6. Call for MEDAL nominations (by 15 June 2012)
7. CP Report [Hugues Goose, co-Editor-in chief 2011-2012]
8. Election CL President
9. A new concept: EGU topical conferences
10. What worked, what didn't work at EGU 2012?



## 3.1 Stats

# Some GA 2012 statistics

### Programme Group Statistics

Scheduled	Total: 1,552
Status	Active: 1,513 (97%) Withdrawn: 39 (3%)
Granted Supports	None: 1,498 (97%) AGTA: 1 (0%) KRTA: 7 (0%) YSTA: 7 (0%)
Presentations	Oral Programme: 486 (31%) Poster Programme: 1,066 (69%)

### Meeting Statistics

Scheduled	Total: 14,134
Status	Active: 13,533 (96%) Withdrawn: 601 (4%)
Granted Supports	None: 13,318 (98%) AGTA: 7 (0%) KRTA: 95 (1%) YSTA: 113 (1%)
Presentations	Oral Programme: 4,438 (31%) Poster Programme: 9,095 (64%)

[Show Statistics for all Programme Groups](#)





## 3.1 Stats

# Some GA 2012 statistics

As of 19 April, the Assembly 2012 provides:

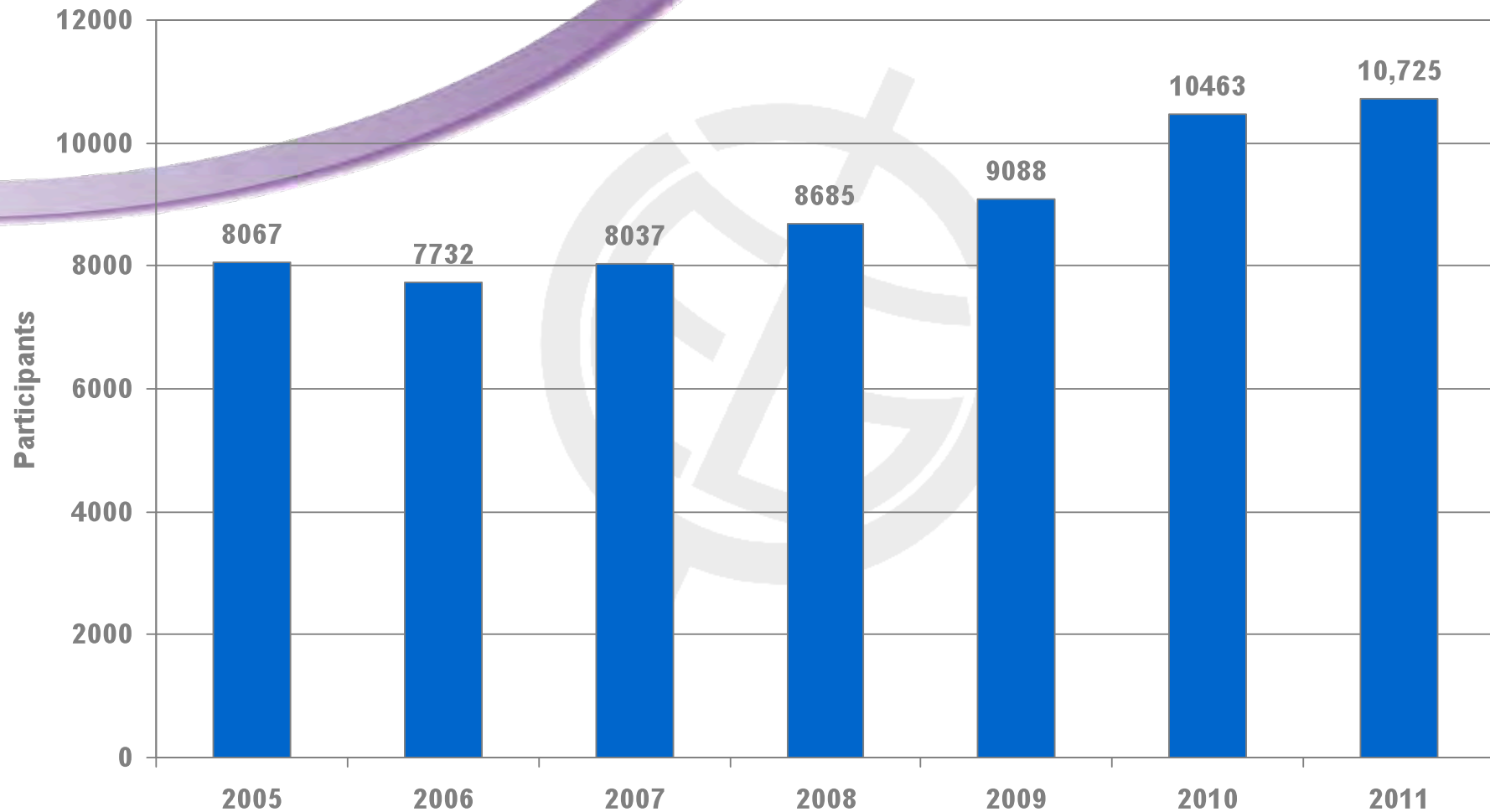
- 13,528 Papers in Programme | +1.5% (2011)
- 4,436 Orals | 9,092 Posters | Ratio 33 / 67
- 530 unique scientific Sessions | 157 PSD Sessions | 165 Side Events\*
- 8,743 Registrations in Advance (thereof 8,639 already paid) | +14.9% (2011)

\*Side Events include: GDB, EG, EOS, ML, KL, SPM, DBM, EBM, UM



## 3.1 Stats

### Participants at EGU Assemblies 2005-2011



Business meeting 2012



# European Geosciences Union

## Division on Climate: Past, Present & Future



### 3.2 Stats

2012

Programme Group		Lead Sessions			Co-org. Sessions		Total	
		#Abs.	%	#Ses.	#Abs.	#Ses.	#Abs.	#Ses.
<b>AS</b>	Atmospheric Sciences	1,146	8%	31	650	21	1,796	52
<b>BG</b>	Biogeosciences	629	5%	27	301	12	930	39
<b>CR</b>	Cryospheric Sciences	403	3%	17	57	2	460	19
<b>EMRP</b>	Earth Magnetism & Rock Physics	214	2%	11	87	4	301	15
<b>CL</b>	Climate: Past, Present, Future	1,113	8%	35	400	13	1,513	48
<b>ERE</b>	Energy, Resources and the Environment	421	3%	14	75	3	496	17
<b>ESSI</b>	Earth & Space Science Informatics	197	1%	10	82	4	279	14
<b>G</b>	Geodesy	366	3%	13	202	7	568	20
<b>GD</b>	Geodynamics	406	3%	17	590	19	996	36
<b>GI</b>	Geosciences Instrumentation & Data Systems	256	2%	11	56	2	312	13
<b>GM</b>	Geomorphology	530	4%	21	372	11	902	32
<b>GMPV</b>	Geochemistry, Mineralogy, Petrology & Volcanology	644	5%	22	490	18	1,134	40
<b>HS</b>	Hydrological Sciences	1,722	13%	65	308	11	2,030	76
<b>IG</b>	Isotopes in Geosciences: Instrumentation and Applications	139	1%	5	89	3	228	8
<b>NH</b>	Natural Hazards	1,028	8%	41	400	13	1,428	54
<b>NP</b>	Nonlinear Processes in Geophysics	420	3%	23	279	9	699	32
<b>OS</b>	Ocean Sciences	519	4%	16	243	8	762	24
<b>PS</b>	Planetary & Solar System Sciences	457	3%	17	200	10	657	27
<b>SM</b>	Seismology	476	4%	18	557	20	1,033	38
<b>SSP</b>	Stratigraphy, Sedimentology & Palaeontology	238	2%	12	152	5	390	17
<b>SSS</b>	Soil System Sciences	906	7%	35	195	6	1,101	41
<b>ST</b>	Solar-Terrestrial Sciences	349	3%	15	132	4	481	19
<b>TS</b>	Tectonics & Structural Geology	818	6%	27	748	29	1,566	56





### 3.3 Str



EGU General Assembly 2012

## Oral Time Block Assignment (based on Statistics from 13 Feb 2012, 09:45 CET)

To be used for the Scheduling via the PCII Tool

PG	Pref. Oral	Pref. Oral %	Pref. Poster	Pref. Poster %	Total 2012	Total 2011	Growth	Medal+	OB 2012	R/W	R/W rounded	OB +/-
US						5						
EG	19	83%	4	17%	23	18	28%					
EOS	41	38%	66	62%	107	102	5%					
AS	703	60%	475	40%	1178	1361	-13%	0	60	3.00	3	0
BG*	405	61%	254	39%	659	697	-5%	1	35	1.75	2	-5
CL	681	59%	472	41%	1153	1032	12%	2	61	3.05	3	1
CR	242	57%	180	43%	422	419	1%	0	22	1.10	1	2
EMRP	151	70%	65	30%	216	177	22%	0	11	0.55	1	-9
ERE	257	58%	185	42%	442	429	3%	0	23	1.15	1	3
ESSI	148	74%	52	26%	200	208	-4%	0	10	0.50	1	-10
G	207	56%	160	44%	367	448	-18%	0	19	0.95	1	-1
GD	229	55%	190	45%	419	409	2%	0	22	1.10	1	2
GI	160	60%	107	40%	267	216	24%	0	14	0.70	1	-6
GM	307	56%	237	44%	544	497	9%	0	28	1.40	1	8
GMPV*	419	63%	245	37%	664	423	57%	1	35	1.75	2	-5
HS	1072	60%	727	40%	1799	1825	-1%	0	92	4.60	5	-8
IG	78	53%	70	47%	148	171	-13%	0	8	0.40	0	8
NH*	669	63%	398	37%	1067	1228	-13%	1	56	2.80	3	-4
NP	299	68%	139	32%	438	455	-4%	1	23	1.15	1	3
OS	322	59%	221	41%	543	621	-13%	1	29	1.45	1	9
PS*	297	63%	176	37%	473	472	0%	1	25	1.25	1	5
SM	255	52%	235	48%	490	472	4%	1	26	1.30	1	6
SSP	135	54%	114	46%	249	128	95%	0	13	0.65	1	-7
SSS	565	59%	393	41%	958	557	72%	1	50	2.50	3	-10
ST*	220	61%	140	39%	360	298	21%	1	19	0.95	1	-1
TS	451	54%	385	46%	836	646	29%	0	43	2.15	2	3
					14022	13314		11	724	36.2	37	

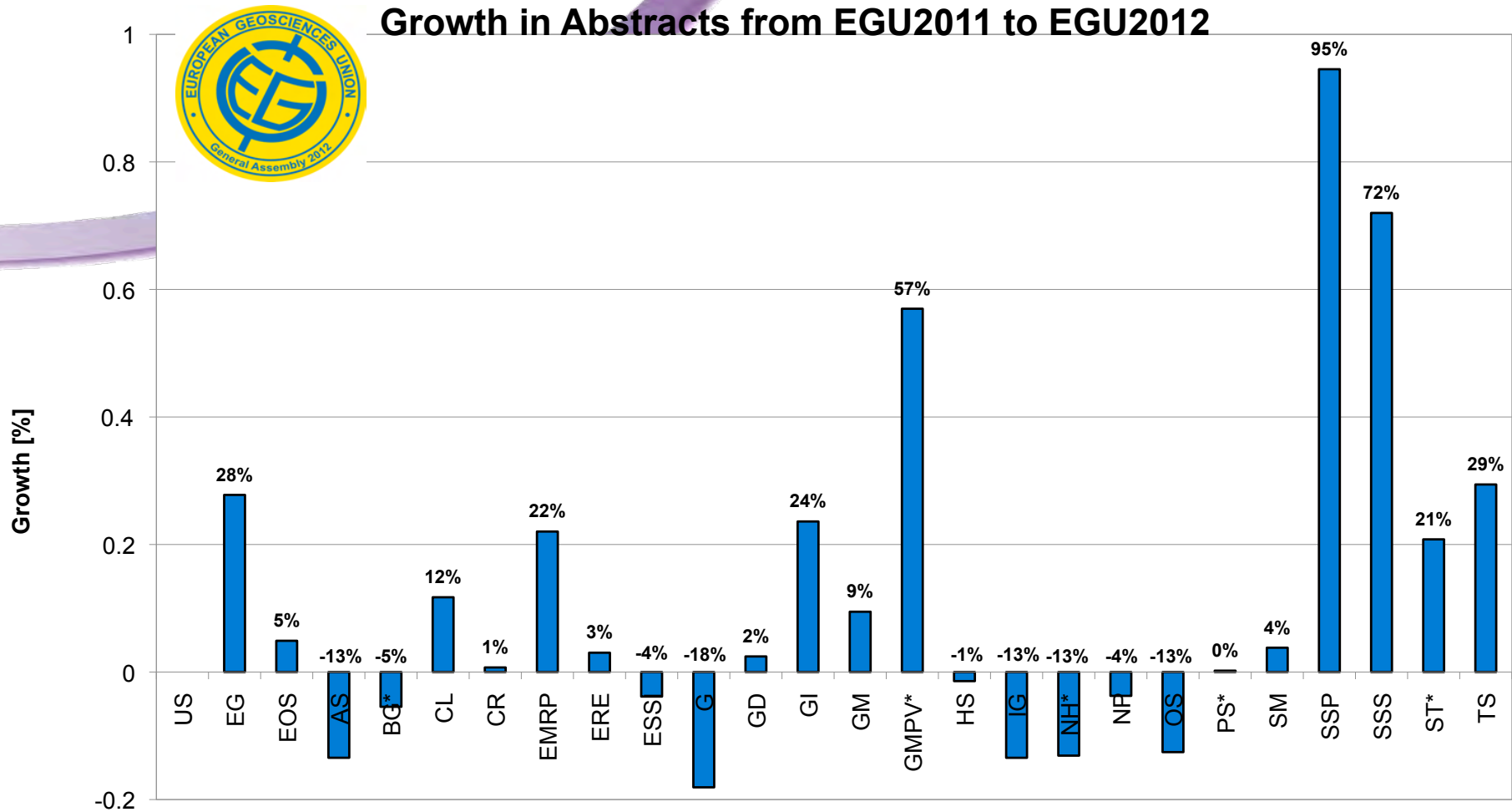
Medal+ = 1 Extra Block for Sessions including Medal Lectures (60 min. incl. 15 min. Medal Presentation)

\* = PGs incl. Arne Richter OYS Award Lecture (30 min.), with an Expansion of 15 min. into the Break (GMPV3.1 | PS5.1/ST6.2 | NH2.1 | BG3.2)

OB = Oral Block | R/W = Rooms per Week | OB +/- = to be distributed in already partly filled Rooms (+), or to be kept free for the other PGs (-)



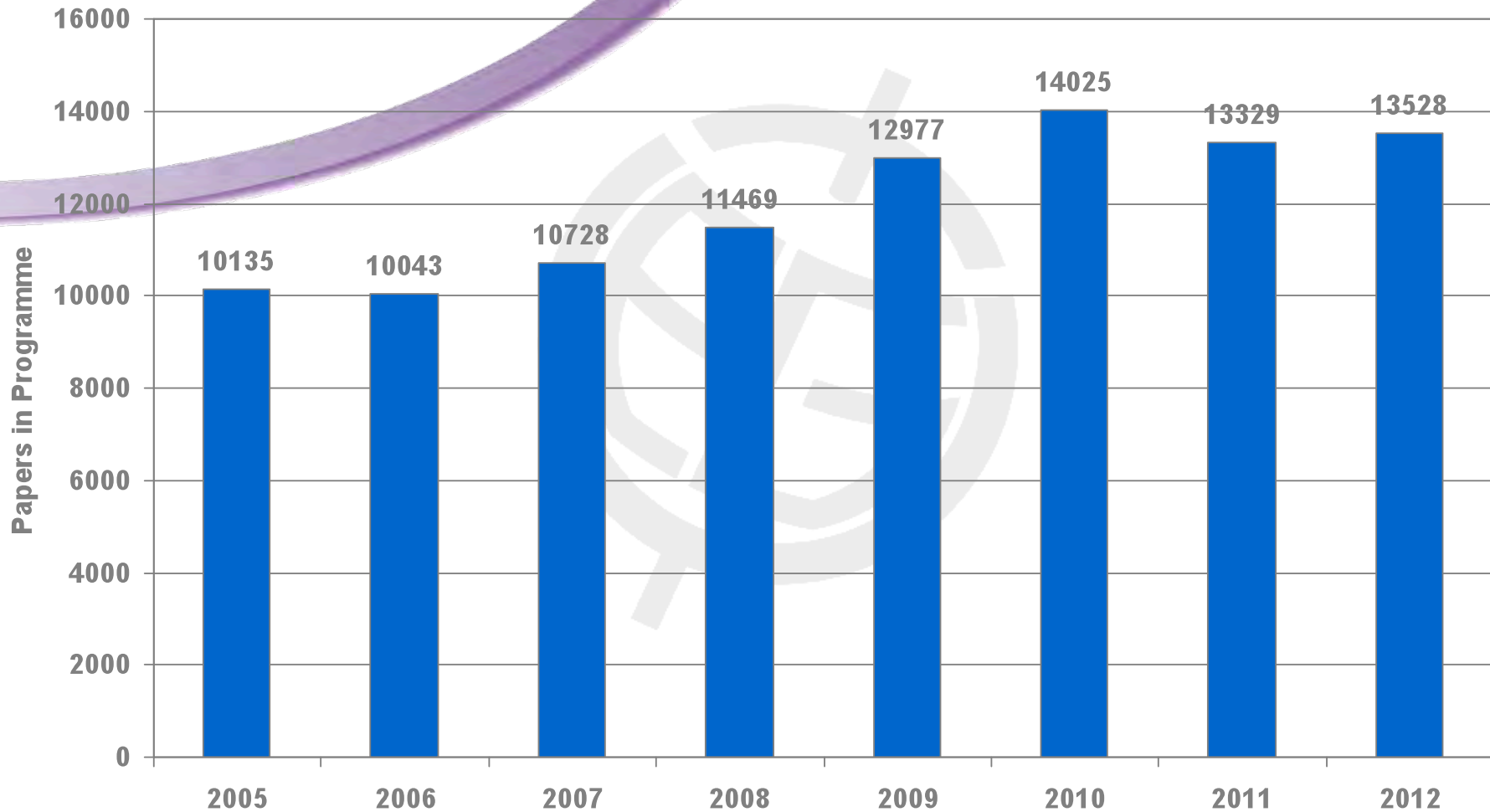
### 3.4 Stats





## 3.5 Stats

### Papers in Programme 2005-2012



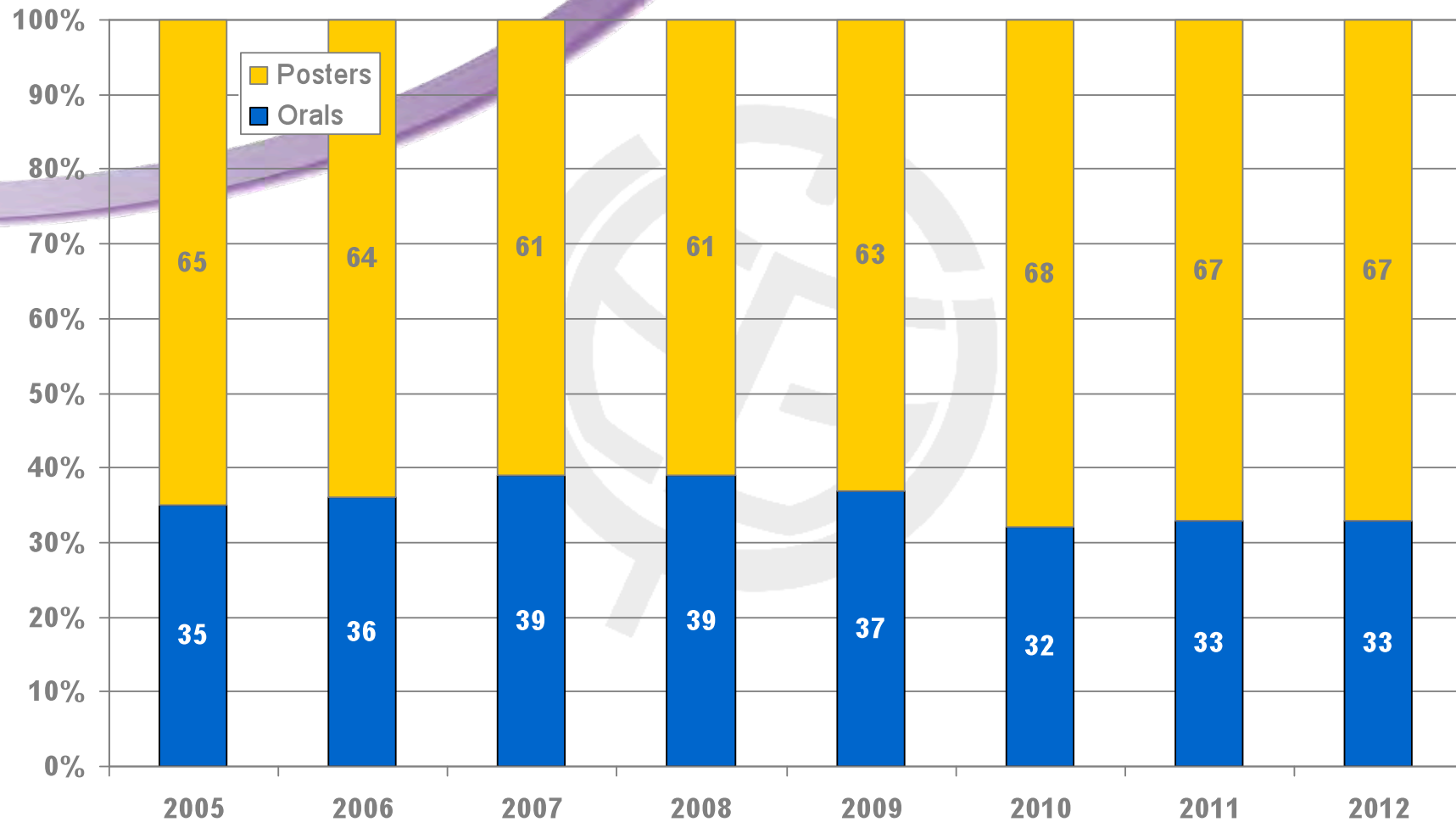
Business meeting 2012





## 3.6 Stats

### Oral/Poster Ratio 2005-2012

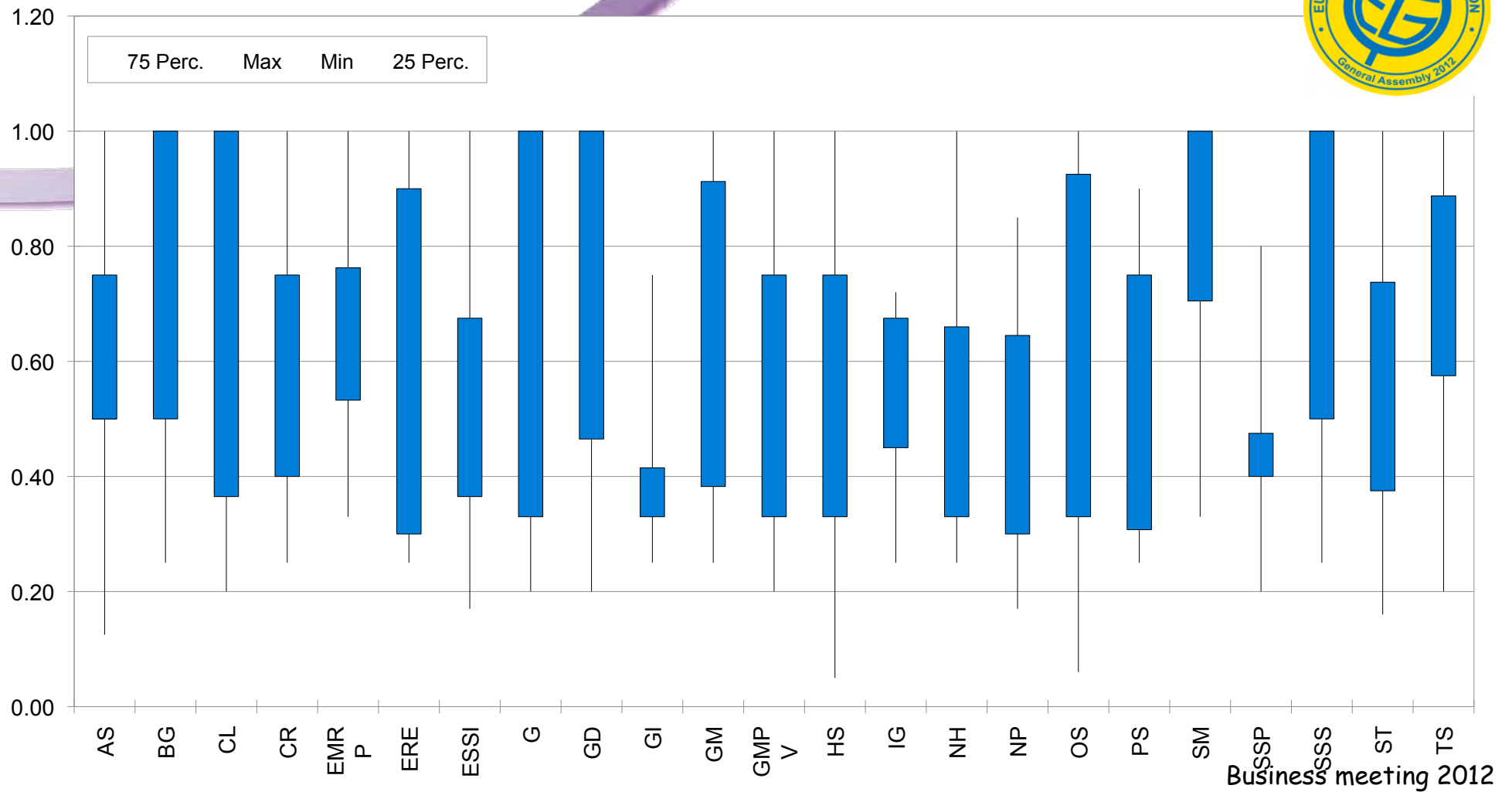


Business meeting 2012



### 3.7 Stats

### EGU2011 Room Occupancy



Business meeting 2012



## 3.8 Stats

### CL room assignment in 2012



EGU General Assembly 2012

## Lecture Room Allocation

To be used for the Scheduling in Tool PCII

Room	Assigned PG	Seats	Time Block Allocations
<b>Basement - Blue Level</b>			
1	NH	200	20 for NH
2		75	20 left
3	SSS	129	20 for SSS
4	NH	200	20 for NH
5	CR/OS	200	12 for CR, 8 for OS
6	SSS	200	20 for SSS
7		80	20 left
8	AS/NH	90	10 for AS, 10 for NH
9	CR/OS	95	10 for CR, 10 for OS
10	AS	200	20 for AS
11	AS/TS	200	10 for AS, 10 for TS
D	NH/G/OS/EG/US	700	6 for NH, 5 for G, 1 for OS, 2 EG, 6 US (Tuesday afternoon!)
<b>Ground Floor - Yellow Level</b>			
12	OS/TS	500	10 for OS, 10 for TS at the beginning of the week
13	CL	109	20 for CL
14	AS	500	20 for AS
15	CL	500	20 for CL
16	CL	120	20 for CL
17	NP/G	120	10 for NP, 10 for G
18	GM/NP/G/GMPV	500	8 for GM, 4 for NP, 4 for G, 4 for GMPV
19	ERE/CL	122	19 for ERE, 1 for CL
<b>First Floor - Green Level</b>			
20	GMPV/TS/EOS	105	6 for GMPV, 13 for TS, 1 for EOS
21	GM/GD	110	10 for GM, 10 for GD
22	SSS/GM	166	10 for SSS, 10 for GM
23	BG	166	20 for BG





# Agenda

1. CL Organisation
2. Awarding of YSOPP awards from EGU 2010
3. EGU 2012 Statistics
4. **Some CL items during GA 2012**
5. Call for Skeleton Programme for EGU 2013
6. Call for MEDAL nominations (by 15 June 2012)
7. CP Report [Hugues Goose, co-Editor-in chief 2011-2012]
8. Election CL President
9. A new concept: EGU topical conferences
10. What worked, what didn't work at EGU 2012?



## 4.1 CL items @ GA2012

Organisation of a Union Session "**Ice Cores and Climate - legacy of a pioneer Willi Dansgaard**" on Thursday 26, room D, 17:30-19:00

- Organisation of a press conference about Climate
- Organisation of the scientific program with 5 subsections and 4+ rooms. Still some difficulties to keep them gathered in the same area (ground floor)
- Poster presentation template (no success this year)
- **EGU Alfred Wegener 2012** medal to Michael Ghil, lecture Wednesday 25, room D, 12:15-13:15



## 4.2a GA news in 2012

- Keeping the 5th block for posters so no oral presentations
- New GA2012 Mobile App
- New printing service for posters
- New EGU newsletter GeoQ
- Reshaping EGU booth with "souvenir items: Tshirts, caps...
- "Meet EGU" opportunity but not CL
- EGU blog, Twitter, Facebook...
- Complains <http://tinyurl.com/EGU2012GA-feedback>
- GA2012 should have more 10,000 participants (Monday 19 April noon 10,117)?





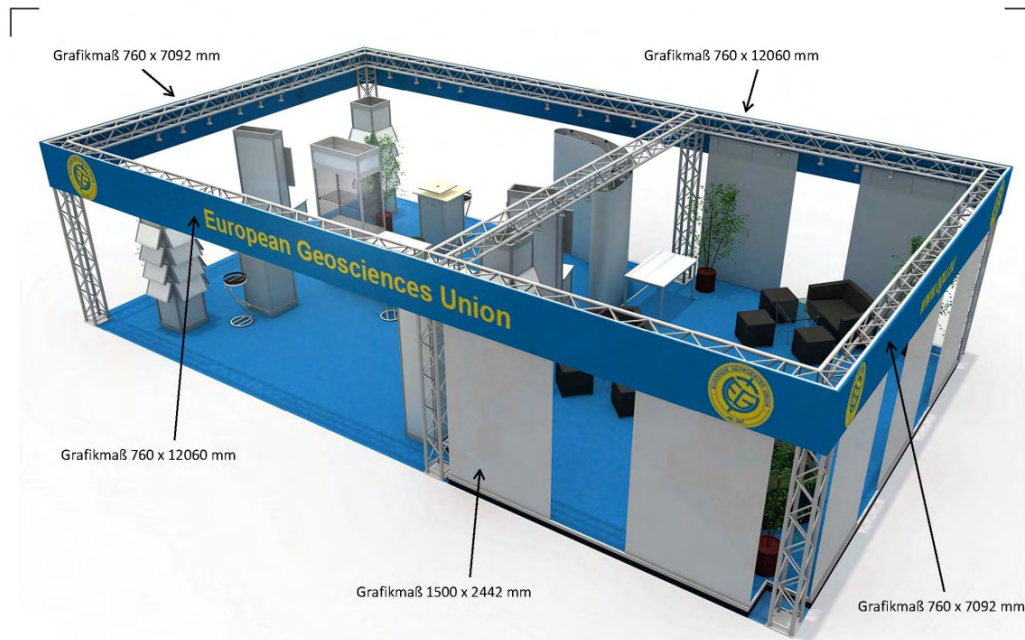
# European Geosciences Union

Division on Climate: Past, Present & Future



## 4.2b GA news in 2012

### New EGU Booth @ GA



Projekt | project: EGU Booth

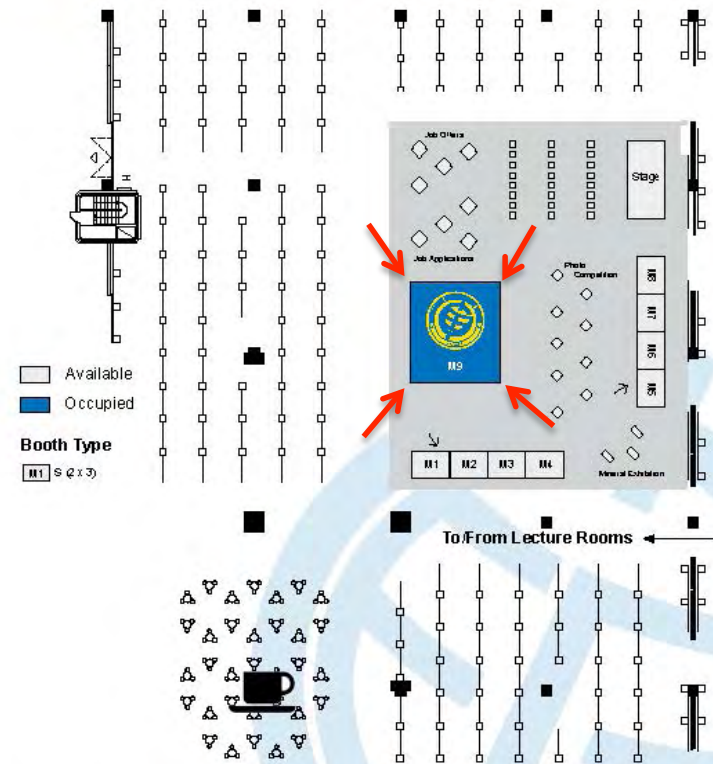
info@expoxx.at | www.expoxx.at | Tel.: 0043 - 1 - 727 20 - 6101

Alle Planungs- und Angebotsunterlagen sind Eigentum der Expoxx Messebau GmbH und können jederzeit zurückverlangt werden. Sie dürfen nicht vervielfältigt oder Dritten zugänglich gemacht werden. All quotation documents remain the property of Expoxx Messebau GmbH, can be reclaimed at any time and may not be copied, disseminated, modified or made available to third parties.



### Job and Education Market

Hall X | Basement – Blue Level

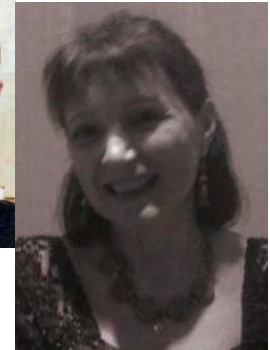


#M9 European Geosciences Union (EGU)





## 4.3a News @ EGU in 2012



- President: Don Dingwell
- New President elect: Günter Blöschl
- New General Secretary Miora Mandic
- Treasurer: Roland Schich
- EGU office established in Munich
- Executive Secretary: Philippe Courtial
- New Press officer: Barbara Ferreira
- Next GA location: ACV Vienna 7-12 April 2013
- New EGU newsletter GeoQ
- New journal



**European Geosciences Union**  
Division on Climate: Past, Present & Future



**4.3b News @ EGU in 2012**

**EGU Executive Office**



**Philippe Courtial**  
Executive Secretary



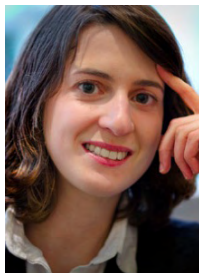
**Edvard Glücksman**  
Science Communications Fellow 2012



**Robert Barsch**  
Webmaster



**Karen Resenberger**  
Secretary



**Bárbara T. Ferreira**  
Media and Communications Officer



# European Geosciences Union

Division on Climate: Past, Present & Future



## 4.3c News @ EGU in 2012

**Tomography of the 2011 Iwaki earthquake (M 7.0) and Fukushima nuclear power plant area to appear in the EGU open-access journal Solid Earth on 14 February 2012.**

**European Geosciences Union**  
Dedicated to the pursuit of excellence in the geosciences and the planetary and space sciences for the benefit of humanity.

Publications | Meetings | Membership | Contact | Login

Divisions:

**Menu**

- Home
- Statements
- General Contact
- Publications
- Meetings
- Inside EGU
- Elections
- Membership
- Awards & Medals
- Media & Outreach
- External News
- Collaborations
- Jobs

**Find us on**

Twitter | Facebook | Google+ | LinkedIn | YouTube

(What is this?)

**Links**

GEOLOG | EGU TV | ima geo

**EGU General Assembly 2012** Vienna | Austria | 22-27 April 2012

**EGU Medal Ceremony at the 2012 General Assembly**

The EGU is pleased to announce its 2012 medalists and awardees. The scientists will be honoured at the EGU medal ceremony at the General Assembly of the European Geosciences Union, taking place in Vienna, Austria from 22-27 April 2012. [\[ Read more \]](#)

**GeoQ – the new newsletter of the European Geosciences Union**

The first issue of GeoQ – the new-look newsletter of the European Geosciences Union – is out now! This magazine and information service to EGU members is replacing the Eggs, and will be distributed from the EGU website every three months. [\[ Read more \]](#)

**Fukushima at increased earthquake risk**

Seismic risk at the Fukushima nuclear plant increased after the magnitude 9 earthquake that hit Japan last March, scientists report. The new study, which uses data from over 6,000 earthquakes, shows the 11 March tremor caused a seismic fault close to the nuclear plant to reactivate. The results are now published in Solid Earth, an open-access journal of the EGU. [\[ Read more \]](#)

**Alexandra Witze and Jane Qiu awarded EGU Science Journalism Fellowship**

The European Geosciences Union (EGU) has named journalists Alexandra Witze and Jane Qiu as the winners of its first Geosciences Communications Fellowship for proposals on volcanology and climate change reporting, respectively. Each will receive €2,500 to cover expenses related to their projects. [\[ Read more \]](#)

## 1st EGU Press Release

### Press Coverage:

- At least 40 newspapers and magazines, Incl.**
- Discovery News
  - Agence France Press
  - Suddeutsche Zeitung
  - New Scientist





# European Geosciences Union

Division on Climate: Past, Present & Future



## 4.3d News @ EGU in 2012

Complete transfer of the EGU newsletter to the office

- Server (Dotsoft) hosting the-eggs has been switched off by 31.03.2011
- URL [www.the-eggs.org](http://www.the-eggs.org) redirected to <http://www.egu.eu/newsletter.html> (till 31.12.2012)
- Creation of a new subpage to host:
  - newly launched EGU newsletter: GeoQ
  - The eggs archives

Education

- News from the EGU Committee on Education – 26

Books

- Structural Geology Algorithms: Vectors and Tensors – 27
- Global Tropical Cyclone Genesis – 27
- Fundamentals of Numerical Weather Prediction – 28
- Environmental Hazards and Disasters: Contexts, Perspectives and Management – 28
- Ocean Acidification – 29

On the Web

- Featured website: Explore Shale – 30
- Social media: Who's following EGU? – 30

Events

- Conferences, meetings and workshops – 31

Archive

The newsletter was known as The Eggs until March 2012.

GeoQ #1	Eggs #37	Eggs #36	Eggs #35	Eggs #34
HTML PDF	PDE	PDE	PDE	PDE
Eggs #33	Eggs #32	Eggs #31	Eggs #30	Eggs #29
PDE	PDE	PDE	PDE	PDE

European Geosciences Union

Dedicated to the pursuit of excellence in the geosciences and the planetary and space sciences for the benefit of humanity.

Publications | Meetings | Membership | Contact | Login

Divisions: [dropdown]

Menu

- Home
- Statements
- General Contact
- Publications
- Meetings
- Inside EGU
- Elections
- Membership
- Awards & Medals
- Media & Outreach
- Newsletter
  - Mentoring Programme
  - IMAGEOC - Open Access Geosciences Image Repository
  - GIFT - Geosciences Information For Teachers
  - EGU TV
- External News
- Collaborations
- Jobs

Find us on

Links

GeoQ

EGU TV

lima geo

GeoQ

GeoQ is the quarterly newsletter of the European Geosciences Union, a magazine and information service for its members. Each new edition of the publication is distributed for free to EGU members, and is made available from this website every three months. Readers can access all [previous issues](#) of the newsletter from the archive below.

Current Issue

GeoQ #1

Table of Content

- Editorial and Letter from the Presidency
- Articles
  - Arsenic levels lowered by adsorption onto soil sediment in the Bengal Basin – 6
  - More tsunamis for Aceh – 7
  - What we know about catastrophic rockslides in the Alps – 8
  - Interview with Dr. Andy Smith, glaciologist who collaborated with BBC's Frozen Planet team – 10
- EGU Voice
  - Division reports – 12
- EGU News
  - New EGU Science Communications Fellow – 14
  - EGU in social media and new website icons – 14
  - International Innovation interviews two EGU Division Presidents – 15
- Press Release
  - Fukushima at increased earthquake risk – 19
- Journal Watch
  - Magnetopause displacements: the possible role of dust – 20
  - Glacial CO2 cycle as a succession of key physical and biogeochemical processes – 20
- External News
  - Engineering team completes ambitious Antarctic expedition in the 'deep-field' – 21
  - Warmer climate, warmer European mountains – 22
  - Unprecedented, man-made trends in ocean's acidity – 23
  - Researchers discover particle which could 'cool the planet' – 24
  - Acidification provides the thrust – 24

Download full issue as interactive PDF





# Agenda

1. CL Organisation
2. Awarding of YSOPP awards from EGU 2010
3. EGU 2012 Statistics
4. Some CL items during GA 2012
5. **Call for Skeleton Programme for EGU 2013**
6. Call for MEDAL nominations (by 15 June 2012)
7. CP Report [Hugues Goose, co-Editor-in chief 2011-2012]
8. Election CL President
9. A new concept: EGU topical conferences
10. What worked, what didn't work at EGU 2012?



## 5. Call for Skeleton program 2013

### **EGU 2013 Program [Vienna]**

- Is the process by which we start constructing program.
- Setting up **SKELETON PROGRAM** now.
- **DDR 2013** program chair of **CL** last time
- Please discuss ideas with me here in Vienna or by e-mail.



# Agenda

1. CL Organisation
2. Awarding of YSOPP awards from EGU 2010
3. EGU 2012 Statistics
4. Some CL items during GA 2012
5. Call for Skeleton Programme for EGU 2013
6. **Call for MEDAL nominations (by 15 June 2012)**
7. CP Report [Hugues Goose, co-Editor-in chief 2011-2012]
8. Election CL President
9. A new concept: EGU topical conferences
10. What worked, what didn't work at EGU 2012?





# European Geosciences Union

Division on Climate: Past, Present & Future



## 6. CL Medals



### Milutin Milankovic Medal

This medal has been established by the Division on Climate: Past, Present & Future in recognition of the scientific and editorial achievements of Milutin Milankovic. This medal is reserved for scientists for their outstanding research in long term climatic changes and modeling.



Wolf Berger



### Hans Oeschger Medal

This medal has been established by the Division on Climate: Past, Present & Future in recognition of the scientific achievement of Hans Oeschger. It is reserved for scientists for their outstanding achievements in ice research and/or short term climatic changes (past, present, future).



Mike Mann

Medal lecture Thursday 26, 15:30-16:30 room 15

<http://www.egu.eu/awards-medals/awards-medals.html>

Business meeting 2012





## 6. CL Medals

### **Hans Oeschger medal committee**

Dominique Raynaud (chair)  
Jean Jouzel  
Ray Bradley  
Robert Delmas  
Françoise Gasse  
Mike Mann replacing Thomas Stocker

### **Milutin Milankovic medal committee**

Martin Claussen (chair)  
André Berger  
Jim Hays  
Andrey Ganopolski  
Wolf Berger replacing Pascale Braconnot

Ex-officio CL and Award committee presidents



## 6. EGU Wegener Medal



### Alfred Wegener Medal & Honorary Membership

The Alfred Wegener Medal & Honorary Membership of the EGU, form one of the three equally-ranked most prestigious awards made by the Union, and they are reserved for scientists who have achieved exceptional international standing in atmospheric, hydrological or ocean sciences, defined in their widest senses, for their merit and their scientific achievements.



Medal lecture Wednesday 25, 12:15-13:15 room D



Michael Ghil



## 6.2 Time Table

### Time Schedule for Union Awards and Division medals

<b>1 January–15 June</b>	Open Call-for-Proposals
<b>15 June–1 September</b>	Survey of all suggestions by the respective Award and Medal Committees. With respect to the Outstanding Young Scientist Awards, the Officers of the Union Divisions will evaluate their proposals between 15 June–30 June, while the Council will select max. 4 candidates from all suggested by the Divisions.
<b>1–30 September</b>	Peer assessment of the nominated candidates by the Union Award Committee.
<b>October</b>	Presentation of the candidates and final approval by the Union Council at its fall meeting.
<b>October/November</b>	Awardees and Medallists are informed to receive their award/medal at the next General Assembly of the Union.



## 6.3 CL Medals

### EGU Union Outstanding Young Scientist Award

*CL Division may nominate ONE person*

<http://www.egu.eu/awards-medals/awards-and-medals.html>

At year at which Award will be presented, nominee should satisfy both criteria: (a) received PhD within last five years, and (b) age 35 or younger.

Selection rule : every division selects one application which is then in competition with the proposals from other divisions, and only 3 awardees per year

If the proposed CL application is turned down, the selected application get an Outstanding Young Scientist award of the division





## 6.4 CL Medals

# EGU Medals & Awards

2012 Nominations

**SUBMISSION DEADLINE 15 June 2012**

Medals & OYS send nominations NOW to:  
<http://www.egu.eu/awards-medals/proposal-and-selection-of-candidates.html>

CL and Union Medals, use EGU web site for guidelines and send proposal to [awards.medals@egu.eu](mailto:awards.medals@egu.eu).

**IF any DOUBT, please ask me!!**



# Agenda

1. CL Organisation
2. Awarding of YSOPP awards from EGU 2010
3. EGU 2012 Statistics
4. Some CL items during GA 2012
5. Call for Skeleton Programme for EGU 2013
6. Call for MEDAL nominations (by 15 June 2012)
7. **CP Report [Hugues Goosse, on behalf of Eric Wolff, co-Editor-in chief 2011-2012]**
8. Election CL President
9. A new concept: EGU topical conferences
10. What worked, what didn't work at EGU 2012?



## 7. CP Report



<http://www.climate-of-the-past.net/index.html>

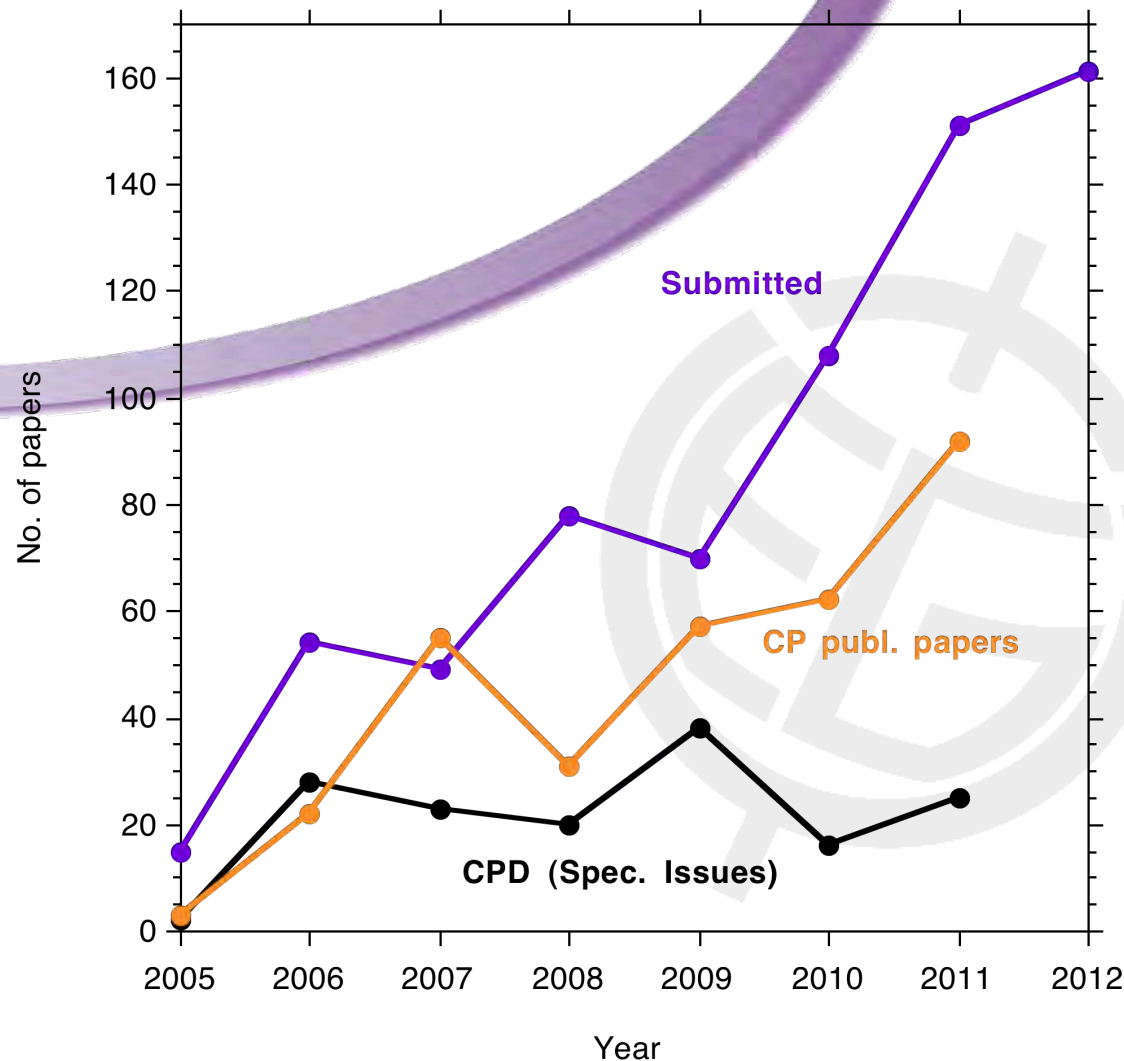


## Climate of the Past: High level aims of CEs

- Increase number of papers without reducing quality/impact
- Maintain impact factor at least above 3
- Reduce reliance on special issues (SI), while still encouraging good ones
- Maintain speed and quality of editing, reviewing and production
- Ensure journal is financially stable, without excessive costs
- See CP recognised as a top journal in our field



## Status and statistics (incl. projection for 2012)



- 1. More papers coming in**
- 2. Impact factor likely to remain ~3**
- 3. Financially stable (giving surplus to EGU)**
- 4. Less reliant on Special Issues, but good ones in pipeline**

# Special issues now scheduled

- Integrated analysis of interglacial climate dynamics (INTERDYNAMIK)
- Initial results from lake El'gygytgyn, western Beringia: first time-continuous Pliocene-Pleistocene terrestrial record from the Arctic
- AICC2012: a new ice core chronology
- Advances in understanding and applying speleothem climate proxies
- Low oxygen in marine environments from the Cretaceous to the present ocean: driving mechanisms, impact, recovery (BG/CP Inter-Journal SI)
- *IPICS (CP/TC inter-journal SI)*

# Editorial Team (Editorial Board)

## - Chiefs:

Carlo Barbante has become established in last year, allowing Eric Wolff to rotate off the team (as of this week)

Marie-France Loutre has agreed to join the team, with the intention that Hugues Goosse will leave the team in April 2013

Hugues will be chief of chiefs for next 12 months

## - New editors (expected to edit ~5 papers/year):

Recruited several new editors last year: mostly deep time and last millennium/instrumental: now 31 editors (including chiefs)

Individual to be added during the year as expertise gaps become apparent



# Agenda

1. CL Organisation
2. Awarding of YSOPP awards from EGU 2010
3. EGU 2012 Statistics
4. Some CL items during GA 2012
5. Call for Skeleton Programme for EGU 2013
6. Call for MEDAL nominations (by 15 June 2012)
7. CP Report [Hugues Goose, on behalf of Eric Wolff, co-Editor-in chief 2011-2012]
- 8. Election CL President**
9. A new concept: EGU topical conferences
10. What worked, what didn't work at EGU 2012?





## 8. CL President

2012-2013 is my last year as CL president and program chair



Elections should take place next fall  
and call for application open in August



# Agenda

1. CL Organisation
2. Awarding of YSOPP awards from EGU 2010
3. EGU 2012 Statistics
4. Some CL items during GA 2012
5. Call for Skeleton Programme for EGU 2013
6. Call for MEDAL nominations (by 15 June 2012)
7. CP Report [Hugues Goose, on behalf of Eric Wolff, co-Editor-in chief 2011-2012]
8. Election CL President
9. **A new concept: EGU topical conferences**
10. What worked, what didn't work at EGU 2012?



## 9. EGU Topical conference

# EGU Topical Conference.

(strong activity in the future of the outreach committee)

- Received EUR 5000 from EGU, start of co-sponsoring.
- Seed money for organization, help in managing the organization



## 9. EGU Topical conference

**EGU Topical Conference within CL?**  
(strong activity in the future of the  
outreach committee)

- > Proposal accepted by EGU council for a CL topical conference series:



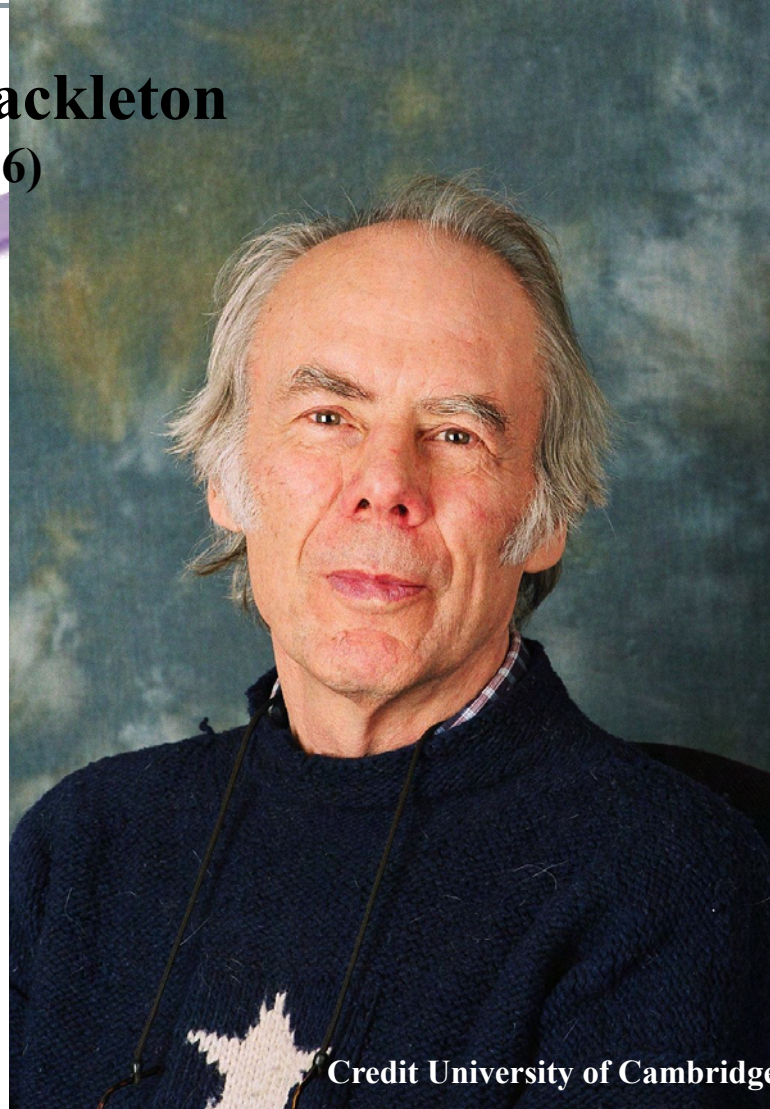


**European Geosciences Union**  
Division on Climate: Past, Present & Future



## 9. EGU Topical conference

**Sir Nicholas John Shackleton**  
(23/6/1937-24/1/2006)



Credit University of Cambridge

**A Paleoclimatologist  
hero!  
A mentor!**

Business meeting 2012



## 9. EGU Topical conference

# EGU Shackleton Topical conference

The concept: addressing topics through the characteristics of the division:

**Past, Present & Future**

Listed potential topics: Dust, Fire, Extreme events...

Science Steering Committee:

Agreed: T Kiefer, G Ganssen, M. Claussen, DDR...



# Agenda

1. CL Organisation
2. Awarding of YSOPP awards from EGU 2010
3. EGU 2012 Statistics
4. Some CL items during GA 2012
5. Call for Skeleton Programme for EGU 2013
6. Call for MEDAL nominations (by 15 June 2012)
7. CP Report [Hugues Goose, on behalf of Eric Wolff, co-Editor-in chief 2011-2012]
8. Election CL President
9. A new concept: EGU topical conferences
10. **What worked, what didn't work at EGU 2012?**





**European Geosciences Union**  
Division on Climate: Past, Present & Future



**Any other matter?**

**Enjoy the 2012 meeting !!!**

**Have fun and see you**

**at EGU2013**

**7-12 April 2013!**