



European Geosciences Union
Division on Climate: Past, Present & Future



Climate: Past, Present & Future

Division Business meeting 2013

Welcome!!!





Agenda

1. CL former Organisation
2. Awarding of OSP awards from EGU 2012
3. EGU 2013 Statistics
4. Some CL items during GA 2013
5. Call for Skeleton Programme for EGU 2014
6. Call for MEDAL nominations (by 15 June 2013)
7. CP Report [Hugues Goose, co-Editor-in chief 2012-2013]
8. ESD Report [Axel Kleidon, co-Editor-in chief 2012-2013]
9. Elected CL President: Prof Thomas Blunier
10. What worked, what didn't work at EGU 2013?



Agenda

1. **CL former Organisation**
2. Awarding of OSP awards from EGU 2012
3. EGU 2013 Statistics
4. Some CL items during GA 2013
5. Call for Skeleton Programme for EGU 2014
6. Call for MEDAL nominations (by 15 June 2013)
7. CP Report [Hugues Goose, co-Editor-in chief 2012-2013]
8. ESD Report [Axel Kleidon, co-Editor-in chief 2012-2013]
9. Elected CL President: Prof Thomas Blunier
10. What worked, what didn't work at EGU 2013?



European Geosciences Union

Division on Climate: Past, Present & Future



1. CL former Organisation

CL Structure

| | | |
|---------------------------------|-----------------------|--|
| President | Denis-Didier Rousseau | cl@egu.eu |
| Science Officers | Jules Hargeaves | juleswork@mac.com |
| | Jan-Berrend Stuur | jbstuur@nioz.nl |
| | Martin Wild | martin.wild@env.ethz.ch |
| Publications | Hugues Goose | hugues.goose@uclouvain.be |
| Awards & Medals | Dominique Raynaud | raynaud@lgge.obs.ujf-grenoble.fr |
| | Martin Claussen | martin.claussen@zmaw.de |
| CL Programme Group Chair | Denis-Didier Rousseau | denis.rousseau@lmd.ens.fr |

CL webpages are managed by EGU executive office
But need for somebody for outreach.
Anybody interested, contact Thomas?



European Geosciences Union

Division on Climate: Past, Present & Future



1. CL Organisation



Prof. Thomas Blunier,
Univ. Copenhagen
New President



Agenda

1. CL former Organisation
2. **Awarding of OSP awards from EGU 2012**
3. EGU 2013 Statistics
4. Some CL items during GA 2013
5. Call for Skeleton Programme for EGU 2014
6. Call for MEDAL nominations (by 15 June 2013)
7. CP Report [Hugues Goose, co-Editor-in chief 2012-2013]
8. ESD Report [Axel Kleidon, co-Editor-in chief 2012-2013]
9. Elected CL President: Prof Thomas Blunier
10. What worked, what didn't work at EGU 2013?



European Geosciences Union

Division on Climate: Past, Present & Future



2.1 OSP

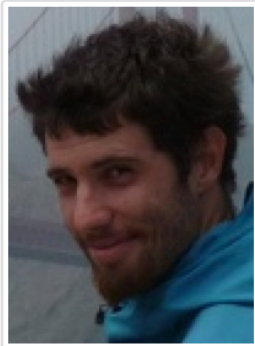
- Outstanding Student Poster (OSP).
- 2 awards from EGU 2011.
- Each laureate:
 - Has name, picture, poster published on EGU medals/awards homepage;
 - Appears in EGU newsletter;
 - Receives conference fee waiver for the next EGU General Assembly.



2.2 OSP

Outstanding Student Poster (OSP) Awards 2012

Climate: Past, Present & Future



Pierre Brigode

The 2012 Outstanding Student Poster (OSP) Awards is awarded to Pierre Brigode for the poster entitled:

Link between rainfall-based weather patterns classification over British-Columbia and El Niño Southern Oscillations (Brigode P.; Mićović Z.; Bernardara P.; Gailhard J.; Paquet E.; Garavaglia F.; Ribstein P.).

Click [here](#) to download the poster as PDF-file.

Resumé:

Pierre Brigode is a PhD Student at the LNHE laboratory, Electricité de France R&D (France) and at the Sisyphe laboratory, University Pierre and Marie Curie (France). His research focuses on the evaluation of an extreme flood estimation method named SCHADDEX in non-stationary climate (observed natural variability and predicted climate change). The EGU 2012 poster presents a study done within a collaboration with BC Hydro (Canadian electric utility) exploring the link between El Niño Southern Oscillations and heavy rainfall events over Coastal British Columbia. A new weather pattern classification describing the typical rainfall patterns over this area has been developed to this aim and is presented in the poster.



2.2 OSP

Outstanding Student Poster (OSP) Awards 2012

Climate: Past, Present & Future



Anne Claude

The 2012 Outstanding Student Poster (OSP) Awards is awarded to Anne Claude for the poster entitled:

Geomorphology and landscape evolution at the Chironico landslide (Leventina) (Claude, A.; Ivy-Ochs, S; Kober, F.; Antognini, M.; Kubik, P. W.).

Resumé:

I am currently doing my PhD at the University of Bern and my research is concentrated on the dating of the Swiss Deckenschotter with cosmogenic nuclides. The poster I presented at the EGU is about my MSc Thesis, which I completed at the ETH Zürich under the supervision of PD Dr. Susan Ivy-Ochs and Dr. Florian Kober. The goal of this project was to get an idea of the age, event chronology, dynamics and landscape evolution of the Chironico area, which has been affected by a landslide. The absolute failure age was assigned through surface exposure dating with the cosmogenic nuclides ^{10}Be and ^{36}Cl . In addition, for the radionuclide ^{10}Be , a local reference production rate of 3.89 ± 0.23 atoms/g/yr could be calculated as the exposure ages agreed well with existing radiocarbon dates from wood.



2.2 OSP

Outstanding Student Poster (OSP) Awards 2012

Climate: Past, Present & Future



Stefan Muthers

The 2012 Outstanding Student Poster (OSP) Awards is awarded to Stefan Muthers for the poster entitled:

On the role of external forcing for the Atlantic Multidecadal Oscillation (Muthers, S; Raible, C. C.; Born, A.).

Click [here](#) to download the poster as PDF-file.

Resumé:

Stefan Muthers is a PhD student at the University of Bern (Switzerland) in the Climate and Environmental Physics Department. He is working on the last millennium with a focus on climate modeling and the influences of external forcings on the climate system. In his poster at EGU General Assembly 2012 he presented his work on the impact of solar variability on the variability of the Atlantic Multidecadal Oscillation (AMO) in an ensemble of model simulation for the last millennium as well as in reconstructions. Two different variability time scales could be identified, an internal driven multi-decadal variability and variability on centennial time scales that is related to variability in the solar forcing.



2.2 OSP

Outstanding Student Poster (OSP) Awards 2012

Climate: Past, Present & Future



Célia Sapart

The 2012 Outstanding Student Poster (OSP) Awards is awarded to Célia Sapart for the poster entitled:

Natural and anthropogenic variations in methane sources over the last 2 millennia (Sapart, C. J.; Monteil, G.; Prokopiou, M.; Van de Wal, R.S.W.; Sperlich, P.; Kaplan, J. O.; Krumhardt, K. M.; Van der Veen, C.; Houweling, S.; Krol, C.M.; Blunier, T.; Sowers, T.; Martinerie, P.; Dahl-Jensen, D.; Röckmann, T.).

Click [here](#) to download the poster as PDF-file.

Resumé:

Célia Julia Sapart was a PhD student at the Institute for Marine and Atmospheric Research Utrecht, Utrecht University, The Netherlands. The goal of her PhD project was to better understand the atmospheric budget of methane and nitrous oxide during the past two thousand years using stable isotope measurements on ice core air. In the summer 2012, she graduated with her PhD and went on with a Post Doc as a follow up of her PhD project. The EGU 2012 poster "Natural and Anthropogenic variations in methane sources over the last 2 millennia" presented high-resolution carbon isotope of methane data from Greenland ice cores over the last 2,000 years. Those data, together with atmospheric model results, allowed reconstructing how the different types of methane sources behaved in the past. It shows that both climate variability and anthropogenic activity played a role in the methane budget during this period.



Agenda

1. CL former Organisation
2. Awarding of OSP awards from EGU 2012
3. **EGU 2013 Statistics**
4. Some CL items during GA 2013
5. Call for Skeleton Programme for EGU 2014
6. Call for MEDAL nominations (by 15 June 2013)
7. CP Report [Hugues Goose, co-Editor-in chief 2012-2013]
8. ESD Report [Axel Kleidon, co-Editor-in chief 2012-2013]
9. Elected CL President: Prof Thomas Blunier
10. What worked, what didn't work at EGU 2013?



3.1 Stats

Some GA 2013 statistics

Programme Group Statistics

| Scheduled | Total: 1,551 |
|------------------|---|
| Status | Active: 1,510 (97%) Withdrawn: 41 (3%) |
| Granted Supports | None: 1,486 (96%) AGTA: 1 (0%) KRTA: 10 (1%) YSTA: 13 (1%) |
| Presentations | Orals: 526 (34%) Posters: 959 (62%) PICOs: 66 (4%) |

Meeting Statistics

| Scheduled | Total: 13,971 |
|------------------|---|
| Status | Active: 13,391 (96%) Withdrawn: 580 (4%) |
| Granted Supports | None: 13,155 (98%) AGTA: 6 (0%) KRTA: 88 (1%) YSTA: 142 (1%) |
| Presentations | Orals: 4,692 (34%) PICOs: 454 (3%) Posters: 8,245 (59%) |

▣ [Show Statistics for all Programme Groups](#)



3.1 Stats

Some GA 2013 statistics

As of 04 April, the Assembly 2013 provides:

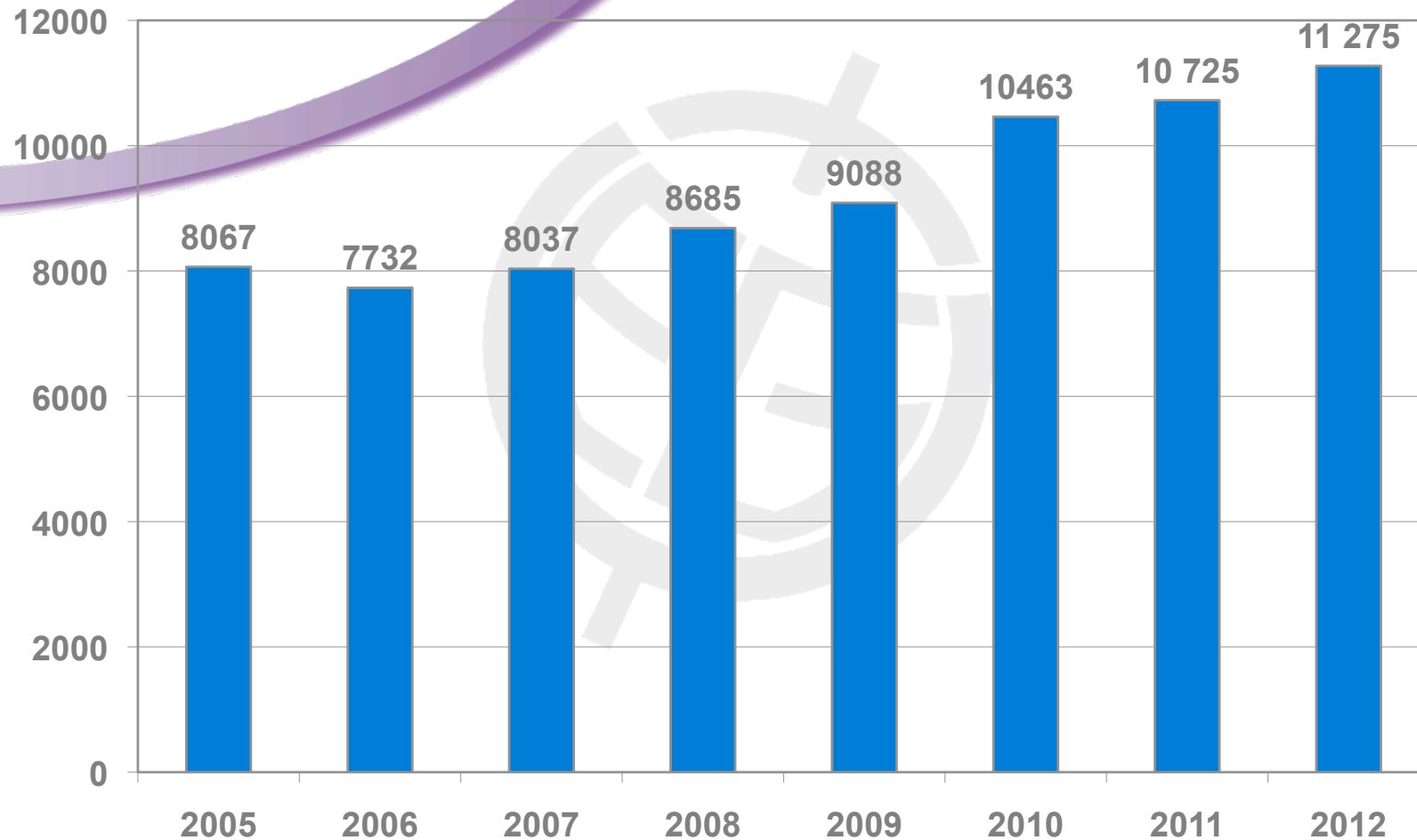
- 13,343 Papers in Programme | -1.4% (2012)
- 4,684 Orals | 8,207 Posters | 452 PICOs | Ratio 35 / 62 / 3
- 448 unique scientific Sessions | 96 PSD Sessions | 143 Side Events*
- 9,876 Registrations in Advance (thereof 8,631 already paid) | +13.0% (2012)

*Side Events include: GDB, EG, EOS, ML, KL, SPM, DBM, EBM, UM



3.1 Stats

Participants at EGU Assemblies 2005-2012



Business meeting 2013



European Geosciences Union

Division on Climate: Past, Present & Future



3.2 Stats

2013

| Programme Group | | Lead Sessions | | | Co-org. Sessions | | Total | |
|-----------------|---|---------------|-----|-------|------------------|-------|-------|-------|
| | | #Abs. | % | #Ses. | #Abs. | #Ses. | #Abs. | #Ses. |
| AS | Atmospheric Sciences | 1,388 | 10% | 37 | 531 | 20 | 1,919 | 57 |
| BG | Biogeosciences | 664 | 5% | 26 | 269 | 10 | 933 | 36 |
| CL | Climate: Past, Present, Future | 1,046 | 8% | 33 | 464 | 15 | 1,510 | 48 |
| CR | Cryospheric Sciences | 385 | 3% | 19 | 151 | 5 | 536 | 24 |
| EMRP | Earth Magnetism & Rock Physics | 175 | 1% | 10 | 163 | 5 | 338 | 15 |
| ERE | Energy, Resources and the Environment | 399 | 3% | 16 | 90 | 4 | 489 | 20 |
| ESSI | Earth & Space Science Informatics | 241 | 2% | 11 | 76 | 3 | 317 | 14 |
| G | Geodesy | 368 | 3% | 16 | 102 | 3 | 470 | 19 |
| GD | Geodynamics | 340 | 3% | 14 | 587 | 22 | 927 | 36 |
| GI | Geosciences Instrumentation & Data Systems | 341 | 3% | 13 | 95 | 4 | 436 | 17 |
| GM | Geomorphology | 514 | 4% | 18 | 501 | 19 | 1,015 | 37 |
| GMPV | Geochemistry, Mineralogy, Petrology & Volcanology | 367 | 3% | 14 | 510 | 18 | 877 | 32 |
| HS | Hydrological Sciences | 1,710 | 13% | 68 | 358 | 13 | 2,068 | 81 |
| IG | Isotopes in Geosciences: Instrumentation and Applications | 130 | 1% | 5 | 79 | 4 | 209 | 9 |
| NH | Natural Hazards | 918 | 7% | 34 | 640 | 21 | 1,558 | 55 |
| NP | Nonlinear Processes in Geophysics | 365 | 3% | 18 | 226 | 8 | 591 | 26 |
| OS | Ocean Sciences | 584 | 4% | 17 | 247 | 11 | 831 | 28 |
| PS | Planetary & Solar System Sciences | 392 | 3% | 16 | 130 | 6 | 522 | 22 |
| SM | Seismology | 492 | 4% | 19 | 467 | 15 | 959 | 34 |
| SSP | Stratigraphy, Sedimentology & Palaeontology | 173 | 1% | 7 | 157 | 5 | 330 | 12 |
| SSS | Soil System Sciences | 982 | 7% | 40 | 452 | 17 | 1,434 | 57 |
| ST | Solar-Terrestrial Sciences | 442 | 3% | 17 | 43 | 2 | 485 | 19 |
| TS | Tectonics & Structural Geology | 846 | 6% | 29 | 698 | 26 | 1,544 | 55 |



European Geosciences Union

Division on Climate: Past, Present & Future



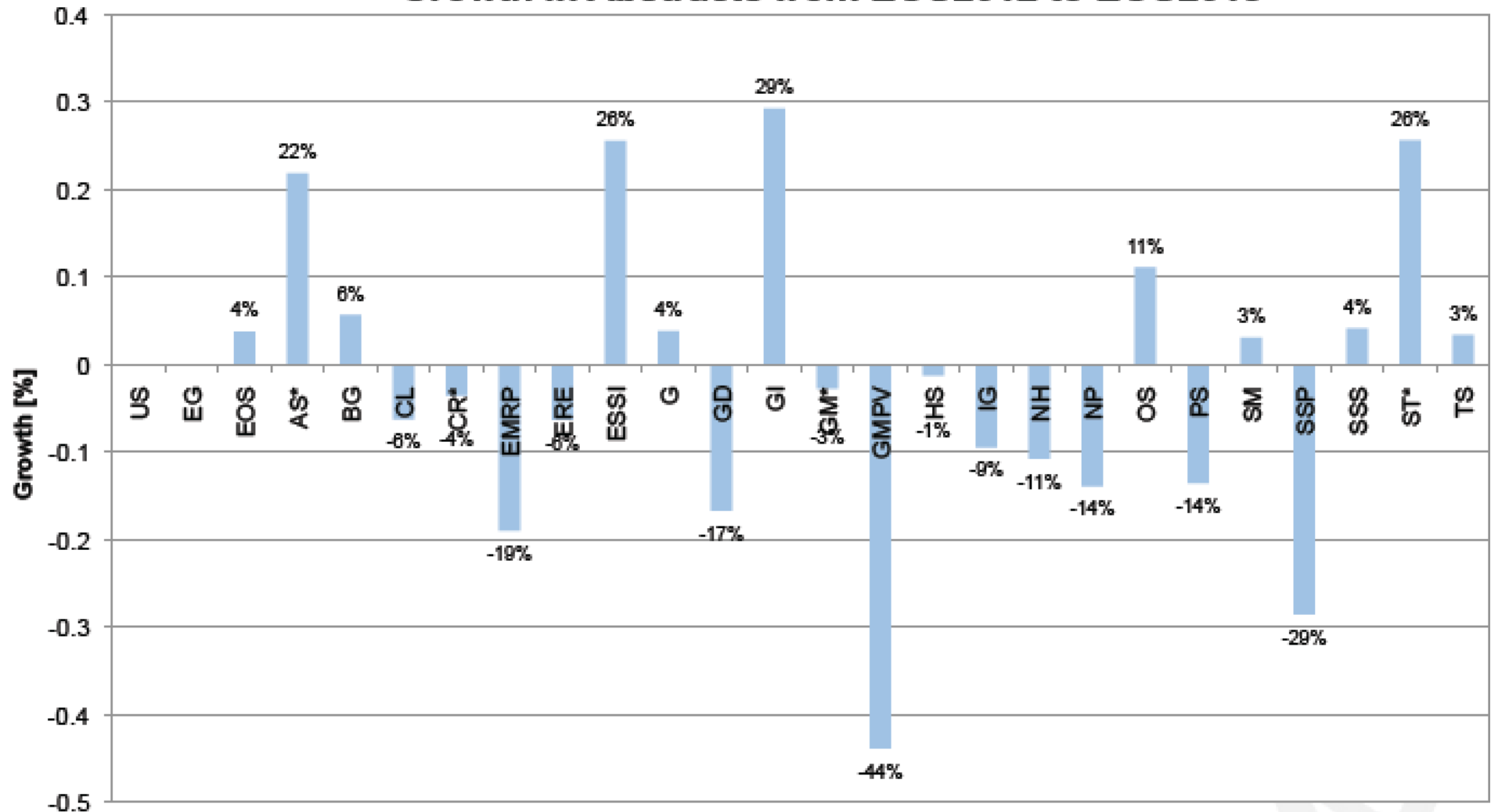
3.3 Stats

| PG | Pref. Oral | Pref. Oral % | Pref. Poster | Pref. Poster % | Total 2013 | Total 2012 | Growth | Medal+ | OB 2013 | R/W | R/W rounded | OB +/- | PICO |
|------|------------|--------------|--------------|----------------|------------|------------|--------|--------|---------|------|-------------|--------|------|
| US | | | | | | | | | 5 | | | | |
| EG | | | | | | | | | | | | | |
| EOS | 39 | 35% | 72 | 65% | 111 | 107 | 4% | | 18 | | | | |
| AS* | 855 | 60% | 580 | 40% | 1435 | 1178 | 22% | 1 | 82 | 4.10 | 4 | 2 | Mo |
| BG | 448 | 64% | 248 | 36% | 696 | 659 | 6% | 1 | 40 | 2.00 | 2 | 0 | Mo |
| CL | 634 | 59% | 447 | 41% | 1081 | 1153 | -6% | 2 | 63 | 3.15 | 3 | 3 | Mo |
| CR* | 234 | 57% | 173 | 43% | 407 | 422 | -4% | 0 | 23 | 1.15 | 1 | 3 | Mo |
| EMRP | 104 | 59% | 71 | 41% | 175 | 216 | -19% | 0 | 10 | 0.50 | 1 | -10 | Mo |
| ERE | 242 | 58% | 172 | 42% | 414 | 442 | -6% | 0 | 23 | 1.15 | 1 | 3 | Tu |
| ESSI | 179 | 71% | 72 | 29% | 251 | 200 | 26% | 0 | 14 | 0.70 | 1 | -6 | Tu |
| G | 210 | 55% | 171 | 45% | 381 | 367 | 4% | 0 | 22 | 1.10 | 1 | 2 | Tu |
| GD | 215 | 62% | 134 | 38% | 349 | 419 | -17% | 1 | 21 | 1.05 | 1 | 1 | Tu |
| GI | 217 | 63% | 128 | 37% | 345 | 267 | 29% | 0 | 20 | 1.00 | 1 | 0 | Tu |
| GM* | 307 | 58% | 222 | 42% | 529 | 544 | -3% | 0 | 30 | 1.50 | 2 | -10 | We |
| GMPV | 214 | 57% | 159 | 43% | 373 | 664 | -44% | 2 | 23 | 1.15 | 1 | 3 | We |
| HS | 1022 | 58% | 754 | 42% | 1776 | 1799 | -1% | 0 | 100 | 5.00 | 5 | 0 | We |
| IG | 61 | 46% | 73 | 54% | 134 | 148 | -9% | 0 | 8 | 0.40 | 0 | 8 | We |
| NH | 585 | 61% | 367 | 39% | 952 | 1067 | -11% | 0 | 54 | 2.70 | 3 | -6 | We |
| NP | 245 | 65% | 132 | 35% | 377 | 438 | -14% | 1 | 22 | 1.10 | 1 | 2 | Th |
| OS | 384 | 64% | 219 | 36% | 603 | 543 | 11% | 1 | 35 | 1.75 | 2 | -5 | Th |
| PS | 259 | 63% | 150 | 37% | 409 | 473 | -14% | 2 | 25 | 1.25 | 1 | 5 | Th |
| SM | 250 | 50% | 255 | 50% | 505 | 490 | 3% | 1 | 30 | 1.50 | 2 | -10 | Th |
| SSP | 88 | 49% | 90 | 51% | 178 | 249 | -29% | 0 | 10 | 0.50 | 1 | -10 | Th |
| SSS | 534 | 54% | 463 | 46% | 997 | 958 | 4% | 0 | 56 | 2.80 | 3 | -4 | Fr |
| ST* | 266 | 59% | 186 | 41% | 452 | 360 | 26% | 1 | 27 | 1.35 | 1 | 7 | Fr |
| TS | 487 | 56% | 377 | 44% | 864 | 836 | 3% | 1 | 50 | 2.50 | 3 | -10 | Fr |
| | | | | | 13794 | 13999 | | 14 | 811 | 39.4 | 41 | | |



3.4 Stats

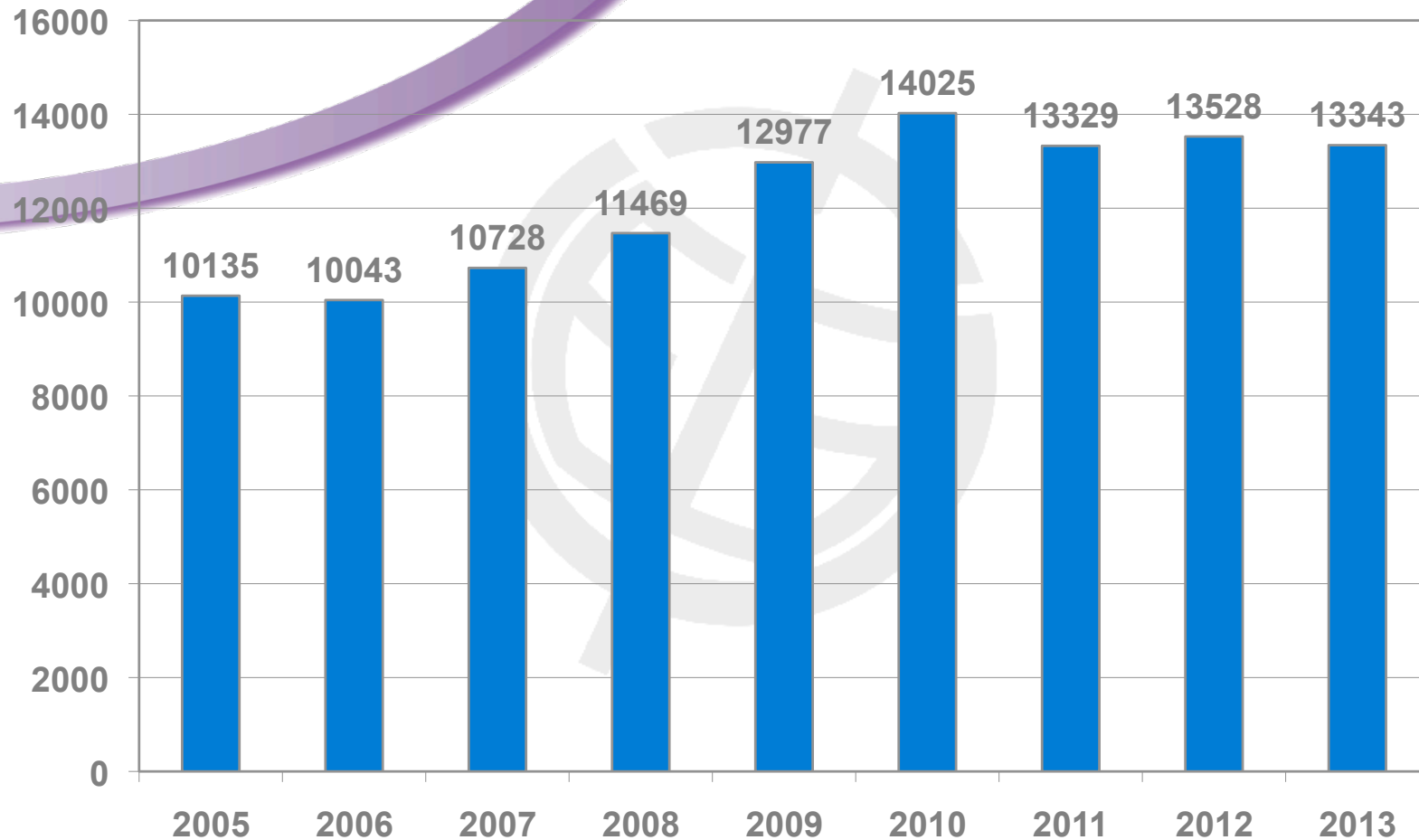
Growth in Abstracts from EGU2012 to EGU2013





3.5 Stats

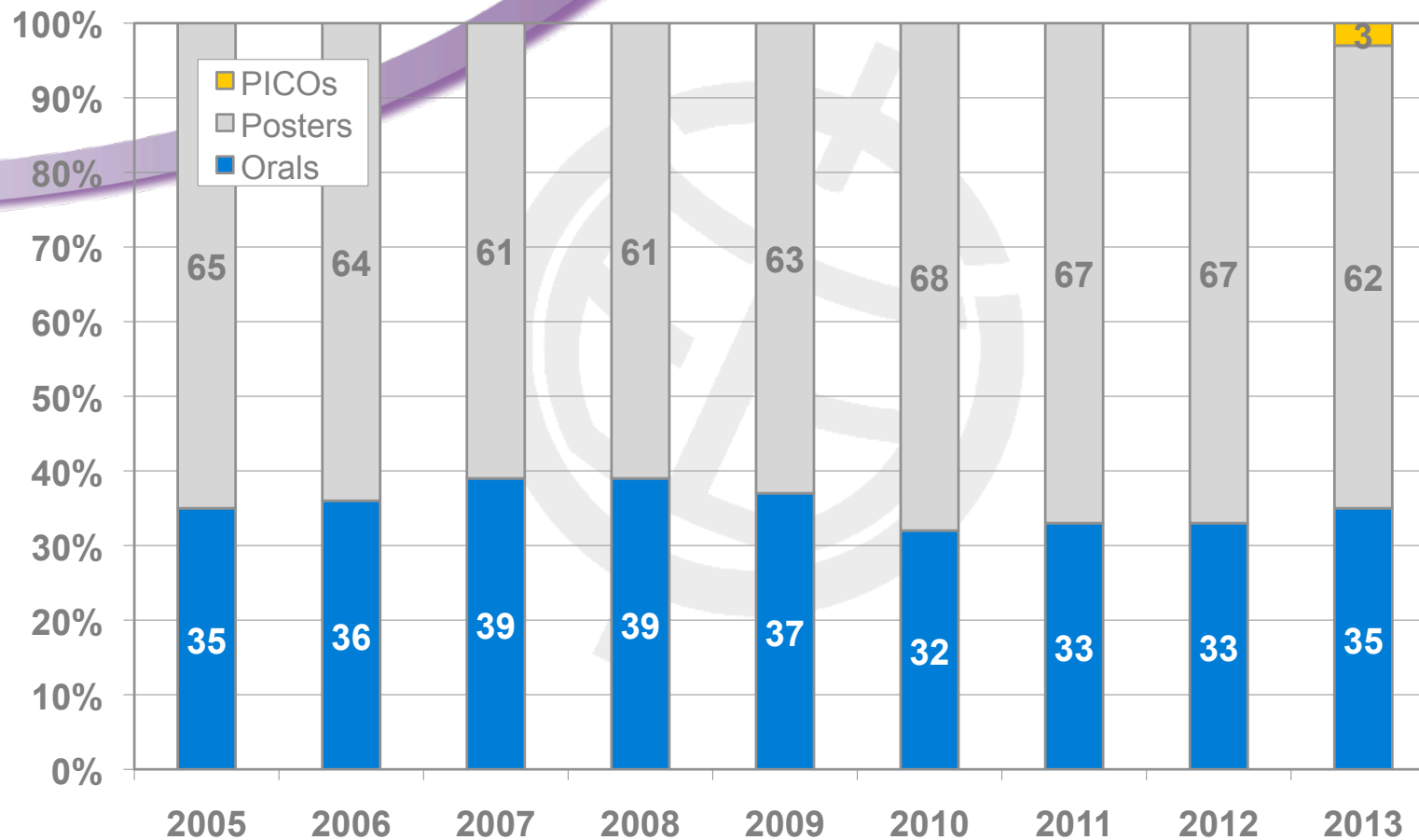
Papers in Programme 2005-2013





3.6 Stats

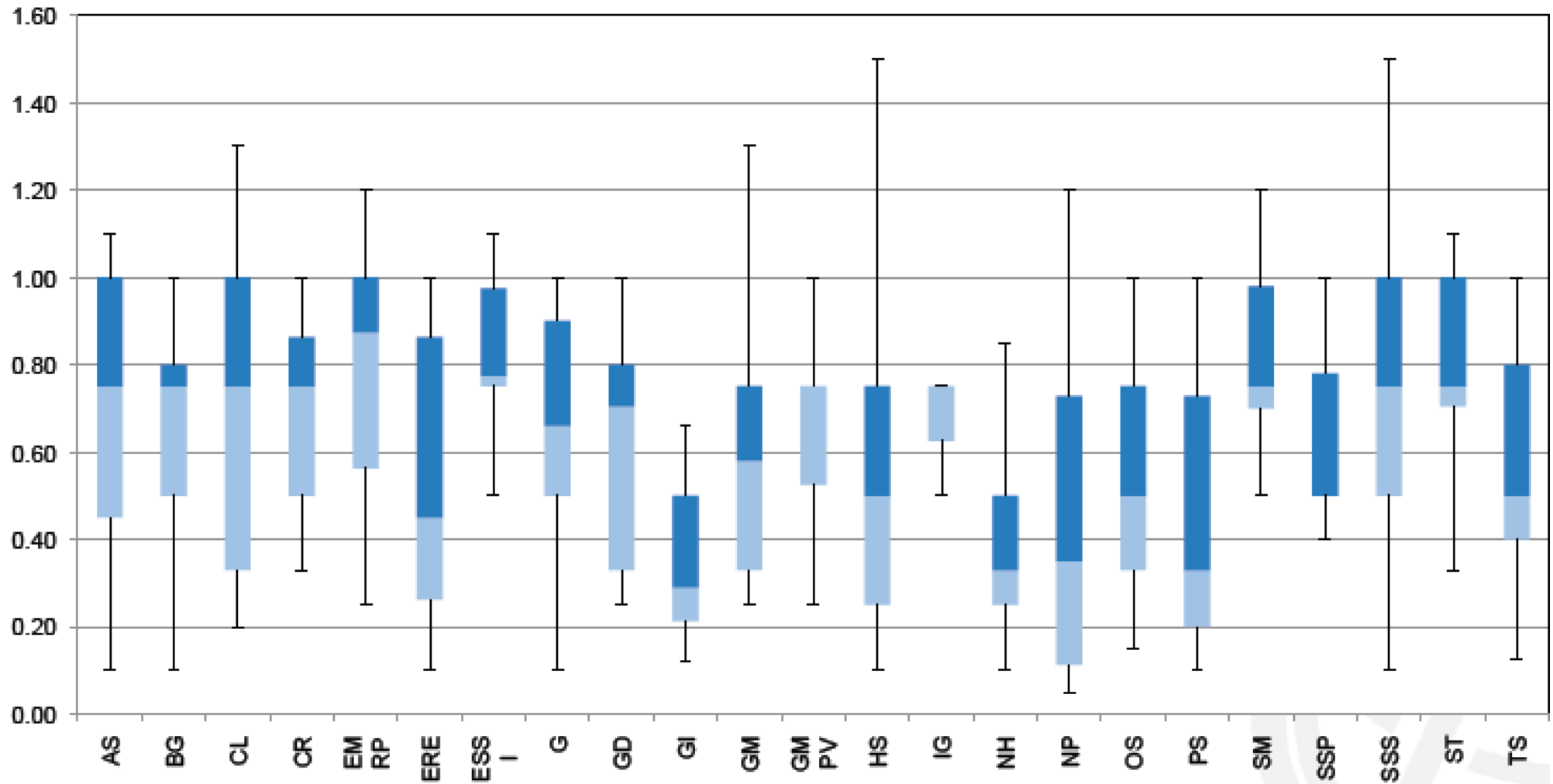
Oral/Poster Ratio 2005-2013





3.7 Stats

EGU2012 Room Occupancy Plot





3.8 Stats

CL room assignment in 2013

Ground Floor – Yellow Level

| | | | |
|-----|-------------|-----|-------------------------------|
| Y1 | US/PS/ST | 531 | US 1 Mo, PS/ST 19 |
| Y2 | OS/PS/ST | 110 | OS 13, PS/ST 7 |
| Y3 | Splinter | 57 | blocked for Splinter Meetings |
| Y4 | US/OS | 531 | US 1 Tu, OS19 |
| Y5 | US/CL/OS/NP | 531 | US 1 Th, CL 4, OS 3, NP 12 |
| Y6 | CL | 117 | CL 20 |
| Y7 | Splinter | 46 | blocked for Splinter Meetings |
| Y8 | CL | 120 | CL 20 |
| Y9 | GDB/CI | 531 | GDB 1 We, CL 19 |
| Y10 | PS/ST/NP/IG | 105 | PS/ST 6, NP 10, IG 4 |
| Y11 | PS/ST | 116 | PS/ST 20 |



Agenda

1. CL former Organisation
2. Awarding of OSP awards from EGU 2012
3. EGU 2013 Statistics
4. **Some CL items during GA 2013**
5. Call for Skeleton Programme for EGU 2014
6. Call for MEDAL nominations (by 15 June 2013)
7. CP Report [Hugues Goose, co-Editor-in chief 2012-2013]
8. ESD Report [Axel Kleidon, co-Editor-in chief 2012-2013]
9. Elected CL President: Prof Thomas Blunier
10. What worked, what didn't work at EGU 2013?



4.1 CL items @ GA2013

- Organisation of the scientific program with the same 5 subsections and 3+1 rooms in the ground floor. Difficulties to keep them gathered in the same area resolved by early request to PC;
- Preference given to co-organized sessions in order to really gather and mix different communities;
- Poster presentation template (no success this year);
- **EGU Alfred Wegener 2013** medal to Edouard Bard, lecture Wednesday 10, room R1, 12:15-13:15;



4.2a GA news in 2013

- Keeping the 5th block for posters so no oral presentations
- GA2013 Mobile App
- New poster presentation: PICO
- Complains [<egu2013.eu/feedback>](http://egu2013.eu/feedback)
- GA2013 should have more 10,000 participants
- Increasing US scientists withdrawals



European Geosciences Union

Division on Climate: Past, Present & Future



4.2a GA news in 2013

Why not advertising a meeting you are organising in the EGU meetings calendar

The screenshot shows the EGU website's Meetings Calendar page. The header includes the EGU logo, the title 'European Geosciences Union', and the tagline 'Dedicated to the pursuit of excellence in the geosciences and the planetary and space sciences for the benefit of humanity.' Navigation links for 'General Assembly 2013', 'Divisions', 'Membership', 'Contact', and 'Login' are present. A 'Division Pages' dropdown menu is also visible. The main content area features a 'Meetings Calendar' section with a 'Show only EGU meetings' filter and icons for calendar and RSS. A text box explains that the list includes meetings, workshops, and conferences, and provides instructions on how to export the list or subscribe to the RSS feed. A yellow callout box with a red arrow pointing to it contains the text: 'If you are interested adding a workshop, meeting, or conference to this list please use the [Meeting Submission Form](#).' Below this, it states that 'General Assemblies and EGU Co-Sponsored Meetings are listed under [EGU meetings](#).' The 'Meetings 2013' section lists events for April: 'EGU General Assembly 2013' in Vienna, Austria (07-12 April 2013); '45th International Liege Colloquium on Ocean Dynamics' in Liège, Belgium (13-17 April 2013); and 'Basalt 2013 - Cenozoic Magmatism in Central Europe' in Görlitz, Germany (24-28 April 2013). A left-hand menu lists various site sections, with 'Meetings' highlighted and an arrow pointing to it.

www.egu.eu/meetings/calendar/



European Geosciences Union
Division on Climate: Past, Present & Future



4.2b GA news in 2012

New PICO poster presentation @ GA



**PICO in CL:
Tues Spot 3**

<http://www.egu2013.eu/pico.html>

Business meeting 2013



4.3a News @ EGU in 2013

- President: Günter Blöschl
- Vice-President: Don Dingwell
- General Secretary Miora Mandrea



- Treasurer elected : Roland Schich
- Several new division presidents elected
- New journal launched in 2013: ESurf
- New committee: Topical events





European Geosciences Union

Division on Climate: Past, Present & Future



4.3b News @ EGU in 2012

EGU Executive Office



Philippe Courtial
Executive Secretary



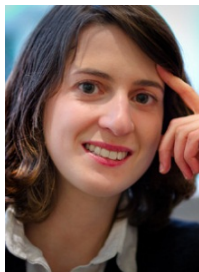
Sara Mynott
Science Communications Fellow 2013



Robert Barsch
Webmaster



Karen Resenberger
Secretary



Bárbara T. Ferreira
Media and Communications Officer



4.3b News @ EGU in 2012

Communication Activities at the Assembly

EGU Today

- EGU Today is a daily newsletter highlighting interesting workshops, lectures and films at GeoCinema, amongst activities at the Assembly
- Paper copies will be distributed daily and available to download

Blogs

- GeoLog & the EGU Blog Network will be sharing great sessions, research, interviews and more throughout the Assembly
- Follow them here: geolog.egu.eu and blogs.egu.eu

Social Media

- Sessions will be advertised on Twitter (@EuroGeosciences) and Facebook (European Geosciences Union)
- Participants can ask questions & keep updated by following #egu2013



Agenda

1. CL former Organisation
2. Awarding of YSOPP awards from EGU 2012
3. EGU 2013 Statistics
4. Some CL items during GA 2013
5. **Call for Skeleton Programme for EGU 2014**
6. Call for MEDAL nominations (by 15 June 2013)
7. CP Report [Hugues Goose, co-Editor-in chief 2012-2013]
8. ESD Report [Axel Kleidon, co-Editor-in chief 2012-2013]
9. Elected CL President: Prof Thomas Blunier
10. What worked, what didn't work at EGU 2013?



5. Call for Skeleton program 2014

EGU 2014 Program [Vienna]

- Is the process by which we start constructing program.
- Setting up SKELETON PROGRAM now.
- Thomas Blunier 2014 program chair of CL
- Please discuss ideas with him here in Vienna or by e-mail (cl@egu.eu).



Agenda

1. CL former Organisation
2. Awarding of OSP awards from EGU 2012
3. EGU 2013 Statistics
4. Some CL items during GA 2013
5. Call for Skeleton Programme for EGU 2014
6. **Call for MEDAL nominations (by 15 June 2013)**
7. CP Report [Hugues Goose, co-Editor-in chief 2012-2013]
8. ESD Report [Axel Kleidon, co-Editor-in chief 2012-2013]
9. Elected CL President: Prof Thomas Blunier
10. What worked, what didn't work at EGU 2013?

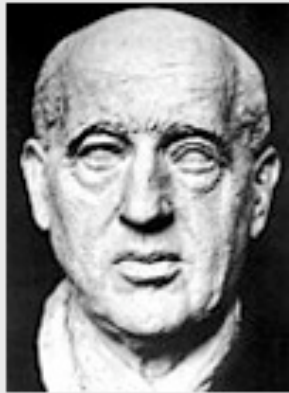


European Geosciences Union

Division on Climate: Past, Present & Future



6. CL Medals



Milutin Milankovic Medal

This medal has been established by the Division on Climate: Past, Present & Future in recognition of the scientific and editorial achievements of [Milutin Milankovic](#). This medal is reserved for scientists for their outstanding research in long term climatic changes and modeling.



Didier Paillard

Medal lecture Tuesday 09, 13:30-14:30 room Y9



Hans Oeschger Medal

This medal has been established by the Division on Climate: Past, Present & Future in recognition of the scientific achievement of [Hans Oeschger](#). It is reserved for scientists for their outstanding achievements in ice research and/or short term climatic changes (past, present, future).



Mira Bar-Matthews

Medal lecture Thursday 11, 10:30-11:30 room Y9

<http://www.egu.eu/awards-medals/awards-medals.html>

Business meeting 2013



6. CL Medals

Hans Oeschger medal committee

Dominique Raynaud (chair)

Jean Jouzel

Ray Bradley

Robert Delmas

Mike Mann

Myriam Bar-Matthews replacing Françoise Gasse

Milutin Milankovic medal committee

Martin Claussen (chair)

André Berger

Andrey Ganopolski

Wolf Berger

Didier Paillard replacing Jim Hays

Ex-officio CL and Award committee presidents



6. EGU Wegener Medal



Alfred Wegener Medal & Honorary Membership

The Alfred Wegener Medal & Honorary Membership of the EGU, form one of the three equally-ranked most prestigious awards made by the Union, and they are reserved for scientists who have achieved exceptional international standing in atmospheric, hydrological or ocean sciences, defined in their widest senses, for their merit and their scientific achievements.



Medal lecture Wednesday 10, 12:15-13:15 room R1



Edouard Bard



European Geosciences Union

Division on Climate: Past, Present & Future



6.2 Time Table

Time Schedule for Union Awards and Division medals

| | |
|----------------------------|---|
| 1 January–15 June | Open Call-for-Proposals |
| 15 June–1 September | Survey of all suggestions by the respective Award and Medal Committees. With respect to the Outstanding Young Scientist Awards, the Officers of the Union Divisions will evaluate their proposals between 15 June–30 June, while the Council will select max. 4 candidates from all suggested by the Divisions. |
| 1–30 September | Peer assessment of the nominated candidates by the Union Award Committee. |
| October | Presentation of the candidates and final approval by the Union Council at its fall meeting. |
| October/November | Awardees and Medallists are informed to receive their award/medal at the next General Assembly of the Union. |



6.3 CL Medals

EGU Union Outstanding Young Scientist Award

CL Division may nominate ONE person

<http://www.egu.eu/awards-medals/awards-and-medals.html>

At year at which Award will be presented, nominee should satisfy both criteria: (a) received PhD within last five years, and (b) age 35 or younger.

Selection rule : every division selects one application which is then in competition with the proposals from other divisions, and only 3 awardees per year

If the proposed CL application is turned down, the selected application get an Outstanding Young Scientist award of the division



6.4 CL Medals

EGU Medals & Awards

2013 Nominations

SUBMISSION DEADLINE 15 June 2013

Medals & OYS send nominations NOW to:
<http://www.egu.eu/awards-medals/proposal-and-selection-of-candidates.html>

CL and Union Medals, use EGU web site for guidelines and send proposal to awards.medals@egu.eu.

IF any DOUBT, please ask Thomas!!

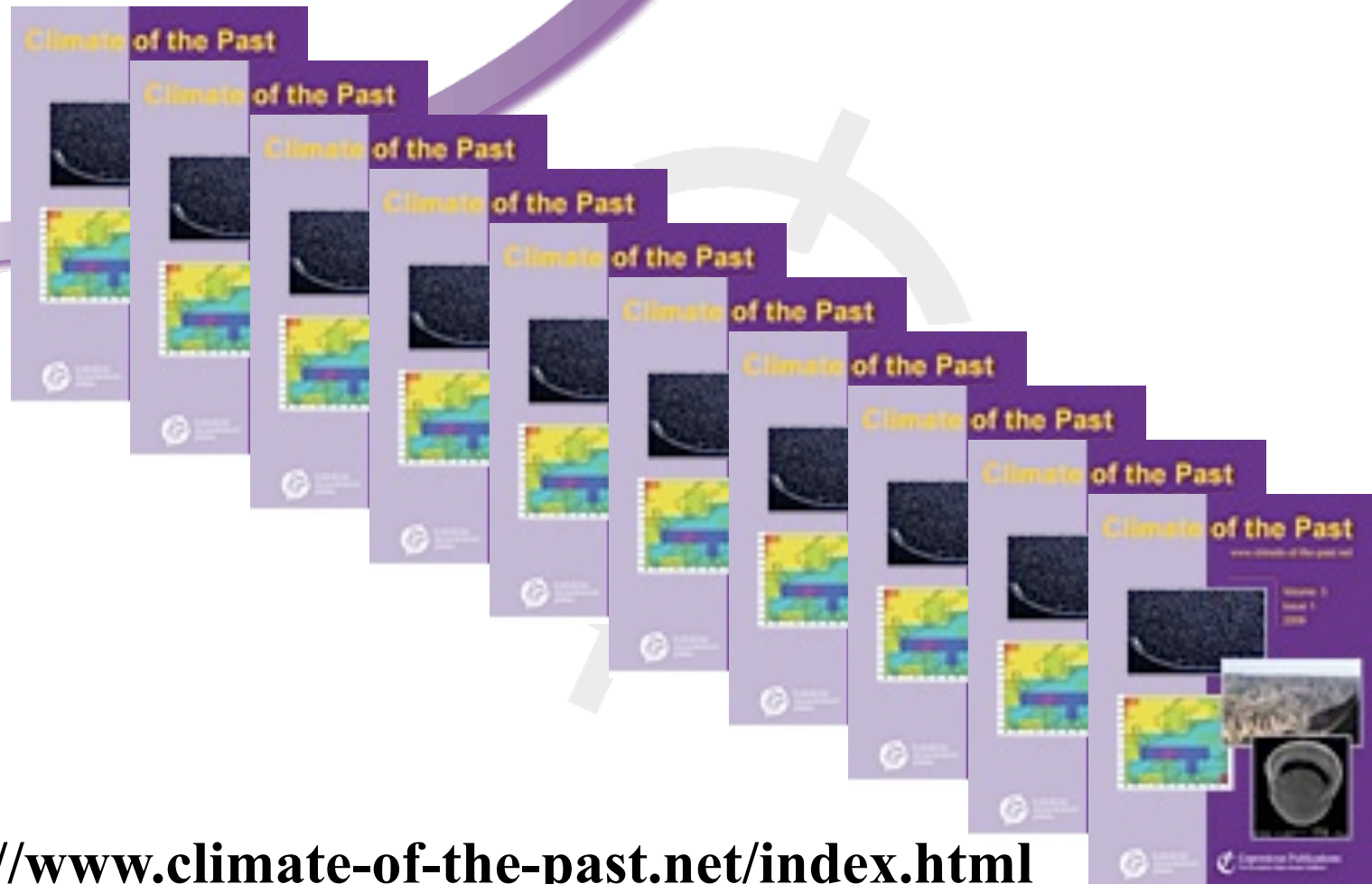


Agenda

1. CL former Organisation
2. Awarding of OSP awards from EGU 2012
3. EGU 2013 Statistics
4. Some CL items during GA 2013
5. Call for Skeleton Programme for EGU 2014
6. Call for MEDAL nominations (by 15 June 2013)
7. **CP Report [Hugues Goose, co-Editor-in chief 2012-2013]**
8. **ESD Report [Axel Kleidon, co-Editor-in chief 2012-2013]**
9. Elected CL President: Prof Thomas Blunier
10. What worked, what didn't work at EGU 2013?



7. CP Report



<http://www.climate-of-the-past.net/index.html>

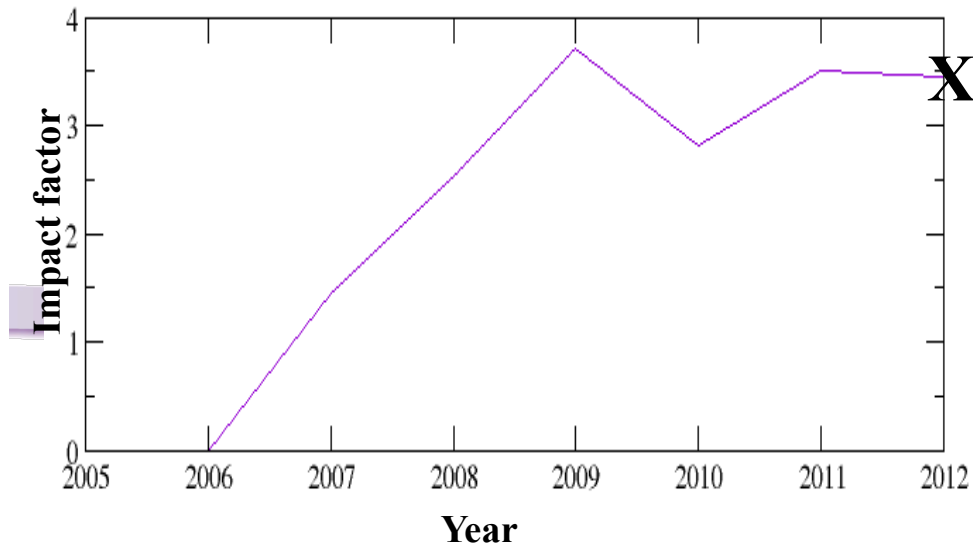


Climate of the Past: High level aims

- Increase number of papers without reducing quality/impact
- Maintain impact factor at least above 3
- Reduce reliance on special issues (SI), while still encouraging good ones
- Maintain speed and quality of editing, reviewing and production
- Ensure journal is financially stable, without excessive costs
- See CP recognised as a top journal in our field

Status and statistics

Impact factor since 2005



X estimate for 2012
(Thanks DDR)

1. More papers coming in (more than 150 published in 2012)
2. Impact factor likely to remain above 3
3. Financially stable (giving surplus to EGU)
4. Not reliant on Special Issues, but good ones in pipeline
5. Typical overall time from submission to CP publication is 5 months

Editorial Team (Editorial Board)

- Chiefs:

Marie-France Loutre has become established in last year, allowing Hugues Goosse to rotate off the team (as of this week)

Denis-Didier Rousseau will be chief of chiefs for next 12 months

- New editors (expected to edit ~5 papers/year):

4 editors have left the team in 2013

Recruited 3 new editors last year: now 30 editors (including chiefs)

Individual to be added during the year as expertise gaps become apparent



Agenda

1. CL former Organisation
2. Awarding of OSP awards from EGU 2012
3. EGU 2013 Statistics
4. Some CL items during GA 2013
5. Call for Skeleton Programme for EGU 2014
6. Call for MEDAL nominations (by 15 June 2013)
7. CP Report [Hugues Goose, co-Editor-in chief 2012-2013]
8. **ESD Report [Axel Kleidon, co-Editor-in chief 2012-2013]**
9. Elected CL President: Prof Thomas Blunier
10. What worked, what didn't work at EGU 2013?



European Geosciences Union

Division on Climate: Past, Present & Future



8. ESD Report



<http://www.earth-system-dynamics.net/>

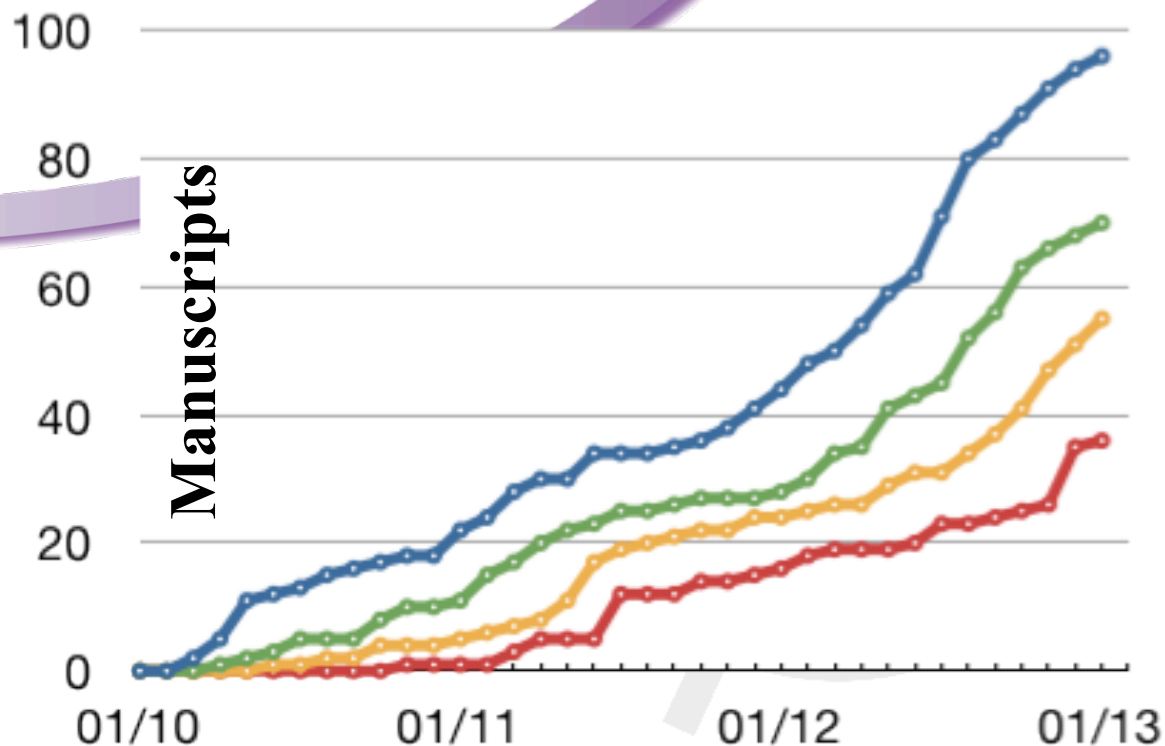


Earth System Dynamics

- **interdisciplinary** journal of the EGU: focus on Earth as a system
- relatively new, started during 2010
- open review, open access
- **main areas:**
 - **Dynamics** of the Earth system: e.g., theory, dynamical systems, interactions, climatology, climate dynamics
 - Earth system **change**: e.g., climate prediction, future climate change, impacts of climatic change, integrated assessment
 - **Management** of the Earth system: e.g., carbon sequestration, climate engineering, renewable energy
- chief editors: Axel Kleidon, Ning Zeng
- editorial board: 28 editors, international, still growing



Submissions since 2010



submissions

reviewed (ESDD)

accepted

published (ESD)

www.earth-system-dynamics.net



Goals for Earth System Dynamics

- to become a **leading journal** for **interdisciplinary research** in **Earth system science** and **Global Change** research
- recruit more chief editors (physical climatology, global change)
- ISI-listing (has been applied for in Feb 2013)

- **no page charges** in 2013
- we welcome your involvement (submissions, special issues, etc)!
- **Contact:**
 - Axel Kleidon (akleidon@bgc-jena.mpg.de)
 - Ning Zeng (zeng@atmos.umd.edu)

www.earth-system-dynamics.net



Agenda

1. CL former Organisation
2. Awarding of OSP awards from EGU 2012
3. EGU 2013 Statistics
4. Some CL items during GA 2013
5. Call for Skeleton Programme for EGU 2014
6. Call for MEDAL nominations (by 15 June 2013)
7. CP Report [Hugues Goose, co-Editor-in chief 2012-2013]
8. ESD Report [Axel Kleidon, co-Editor-in chief 2012-2013]
9. **Elected CL President: Prof Thomas Blunier**
10. What worked, what didn't work at EGU 2013?



European Geosciences Union
Division on Climate: Past, Present & Future



9. CL President

2013-2015
new CL president and program chair



Prof. Thomas Blunier, Univ. Copenhagen



Agenda

1. CL former Organisation
2. Awarding of OSP awards from EGU 2012
3. EGU 2013 Statistics
4. Some CL items during GA 2013
5. Call for Skeleton Programme for EGU 2014
6. Call for MEDAL nominations (by 15 June 2013)
7. CP Report [Hugues Goose, co-Editor-in chief 2012-2013]
8. ESD Report [Axel Kleidon, co-Editor-in chief 2012-2013]
9. Elected CL President: Prof Thomas Blunier
10. **What worked, what didn't work at EGU 2013?**



European Geosciences Union
Division on Climate: Past, Present & Future



Any other matter?

Enjoy the 2013 meeting !!!

Have fun and see you

at EGU2013

27 April - 2 May 2013!